

**Datasheet for 200-106-212****Bilirubin Oxidase Antibody Biotin Conjugated****Overview**

<b>Description:</b>	Anti-Bilirubin Oxidase (Myrothecium verrucaria) (GOAT) Antibody Biotin Conjugated (BULK ORDER) - 200-106-212
<b>Item No.:</b>	200-106-212
<b>Size:</b>	10 mg
<b>Applications:</b>	WB
<b>Reactivity:</b>	Myrothecium verrucaria
<b>Host Species:</b>	Goat

**Product Details**

<b>Background:</b>	Anti-Bilirubin Oxidase antibody is an enzyme that increases the oxidation rate of bilirubin to biliverdin and other substrates. It is ideal for investigators interested in Metabolism or Signal Transduction research.
<b>Synonyms:</b>	goat anti-Bilirubin Oxidase biotin conjugation, goat anti-Bilirubin Oxidase Antibody biotin Conjugated
<b>Host Species:</b>	Goat
<b>Conjugate:</b>	Biotin
<b>Clonality:</b>	Polyclonal
<b>Format:</b>	IgG

**Target Details**

<b>Gene Name:</b>	BLRO_MYRVE
<b>Reactivity:</b>	Myrothecium verrucaria
<b>Immunogen Type:</b>	Native Protein
<b>Immunogen:</b>	Bilirubin Oxidase [Myrothecium verrucaria]

**Purity/Specificity:** Anti-Bilirubin Oxidase is an IgG fraction antibody purified from monospecific antiserum by a multi-step process which includes delipidation, salt fractionation and ion exchange chromatography followed by extensive dialysis against the buffer stated above. Assay by immunoelectrophoresis resulted in a single precipitin arc against anti-Biotin, anti-Goat Serum as well as purified and partially purified Bilirubin Oxidase [*Myrothecium verrucaria*]. Cross reactivity against Bilirubin Oxidase from other sources is unknown.

**Relevant Links:**

- [UniProtKB - Q12737](#)

## Application Details

**Tested Applications:** WB

**Application Note:** Anti-Bilirubin Oxidase has been tested by western blot and is suitable to be assayed against 1.0 ug of Bilirubin Oxidase in a standard capture ELISA using Peroxidase Conjugated Streptavidin #S000-03 and ABTS (2,2'-azino-bis-[3-ethylbenthiazoline-6-sulfonic acid]) code # ABTS-100 as a substrate for 30 minutes at room temperature. A working dilution of 1:1,000 to 1:3,000 of the reconstitution concentration is suggested for this product.

**Assay Dilutions:** All assays should be optimized by the user. Recommended dilutions (if any) may be listed below.

**ELISA:** 1:5,000 - 1:20,000

**IP:** 1:100

**WB:** 1:500 - 1:5,000

## Formulation

**Physical State:** Lyophilized

**Concentration:** 10.0 mg/mL by UV absorbance at 280 nm

**Buffer:** 0.02 M Potassium Phosphate, 0.15 M Sodium Chloride, pH 7.2

**Preservative:** 0.01% (w/v) Sodium Azide

**Stabilizer:** 10 mg/mL Bovine Serum Albumin (BSA) - Immunoglobulin and Protease free

**Reconstitution Volume:** 1.0 mL

**Reconstitution Buffer:** Restore with deionized water (or equivalent)

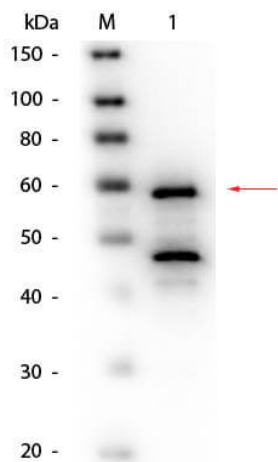
## Shipping & Handling

**Shipping Condition:** Ambient

**Storage Condition:** Store vial at 4° C prior to restoration. For extended storage aliquot contents and freeze at -20° C or below. Avoid cycles of freezing and thawing. Centrifuge product if not completely clear after standing at room temperature. This product is stable for several weeks at 4° C as an undiluted liquid. Dilute only prior to immediate use.

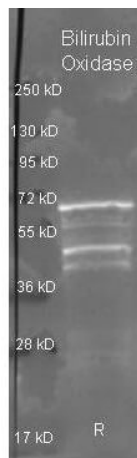
**Expiration:** Expiration date is one (1) year from date of receipt.

## Images



### Western Blot

Western Blot of Goat anti-Bilirubin Oxidase (*Myrothecium verrucaria*) Antibody Biotin Conjugated. Lane 1: Bilirubin Oxidase (*Myrothecium verrucaria*). Load: 50 ng per lane. Primary antibody: Goat anti-Bilirubin Oxidase (*Myrothecium verrucaria*) Antibody Biotin Conjugated at 1:1,000 overnight at 4°C. Secondary antibody: HRP Streptavidin (p/n S000-03) 1:40,000 in MB-070 for 30 min at RT. Block: MB-070 for 30 minutes at RT. Predicted/Observed size: 64 kDa, 60 kDa for Bilirubin Oxidase. Other band(s): Bilirubin Oxidase splice variants and isoforms.



### Western Blot

Rockland Goat anti Bilirubin Oxidase antibody (200-101-212 lot 6533) was used to detect Bilirubin Oxidase under reducing (R) conditions. A samples of ~1ug of purified protein contained 4% BME and was boiled for 5 minutes and run by SDS-PAGE on a 4-20% acrylamide gel. Protein was transferred to nitrocellulose and probed with 1:3000 dilution of primary antibody (ON 4 C in MB-070). Detection shown was using Dylight 488 conjugated Donkey anti goat (605-741-125 lot 21094 1:10K in TBS/MB-070 1 hr RT) and Dylight 649 conjugated Donkey anti goat (605-743-125 lot 20834 1:10K in TBS/MB-070) 1 hr RT. Images were collected using the BioRad VersaDoc System

## Disclaimer

This product is for research use only and is not intended for therapeutic or diagnostic applications. Please contact a technical service representative for more information. All products of animal origin manufactured by Rockland Immunochemicals are derived from starting materials of North American origin. Collection was performed in United States Department of Agriculture (USDA) inspected facilities and all materials have been inspected and certified to be free of disease and suitable for exportation. All properties listed are typical characteristics and are not specifications. All suggestions and data are offered in good faith but without guarantee as conditions and methods of use of our products are beyond our control. All claims must be made within 30 days following the date of delivery. The prospective user must determine the suitability of our materials before adopting them on a commercial scale. Suggested uses of our products are not recommendations to use our products in violation of any patent or as a license under any patent of Rockland Immunochemicals, Inc. If you require a commercial license to use this material and do not have one, then return this material, unopened to: Rockland Inc., P.O. BOX 5199, Limerick, Pennsylvania, USA.