

## Datasheet for 200-106-211

## Glycerol Kinase Antibody Biotin Conjugated

### Overview

<b>Description:</b>	Anti-Glycerol Kinase (Cellulomonas species) (GOAT) Antibody Biotin Conjugated (BULK ORDER) - 200-106-211
<b>Item No.:</b>	200-106-211
<b>Size:</b>	10 mg
<b>Applications:</b>	ELISA, WB
<b>Reactivity:</b>	Glycerol Kinase (Cellulomonas)
<b>Host Species:</b>	Goat

### Product Details

<b>Background:</b>	Anti-Glycerol Kinase antibody recognizes the phosphotransferase enzyme glycerol kinase. Glycerol kinase catalyzes the formation of glycerol phosphate by transferring a phosphate from ATP to glycerol. Dihydroxyacetone and L-glyceraldehyde can also act as acceptors in place of glycerol. Anti-Glycerol Kinase is ideal for investigators interested in Cancer, Metabolism, and Kinase/Phosphatase enzymology.
<b>Synonyms:</b>	goat anti-Glycerol Kinase Antibody biotin Conjugation, biotin Conjugated goat anti-Glycerol Kinase Antibody, ATP glycerol 3 phosphotransferase antibody, GK antibody, GK antibody, GK1 antibody, GKD antibody, Glycerokinase antibody, Glycerol kinase antibody, Glycerol kinase deficiency antibody
<b>Host Species:</b>	Goat
<b>Conjugate:</b>	Biotin
<b>Clonality:</b>	Polyclonal
<b>Format:</b>	IgG

### Target Details

<b>Gene Name:</b>	glpK
<b>Reactivity:</b>	Glycerol Kinase (Cellulomonas)
<b>Immunogen Type:</b>	Native Protein

<b>Immunogen:</b>	Glycerol Kinase [Cellulomonas species]
<b>Purity/Specificity:</b>	Anti-Glycerol Kinase is an IgG fraction antibody purified from monospecific antiserum by a multi-step process which includes delipidation, salt fractionation and ion exchange chromatography followed by extensive dialysis against the buffer stated above. Assay by immunoelectrophoresis resulted in a single precipitin arc against anti-Biotin, anti-Goat Serum as well as purified and partially purified Glycerol Kinase [Cellulomonas species]. Cross reactivity against Glycerol Kinase from other sources is unknown.
<b>Relevant Links:</b>	<ul style="list-style-type: none"><li>• <a href="#">UniProtKB - D0VZG4</a></li><li>• <a href="#">NCBI - BAI49417.1</a></li><li>• <a href="#">GeneID - 6960048</a></li></ul>

## Application Details

<b>Tested Applications:</b>	ELISA, WB
<b>Application Note:</b>	Anti-Glycerol Kinase has been tested by ELISA and western blot. This product is assayed against 1.0 ug of Glycerol Kinase in a standard capture ELISA using Peroxidase Conjugated Streptavidin #S000-03 and ABTS (2,2'-azino-bis-[3-ethylbenthiazoline-6-sulfonic acid]) code # ABTS-100 as a substrate for 30 minutes at room temperature. A working dilution of 1:4,000 to 1:20,000 of the reconstitution concentration is suggested for this product.
<b>Assay Dilutions:</b>	All assays should be optimized by the user. Recommended dilutions (if any) may be listed below.
<b>ELISA:</b>	1:4,000 - 1:20,000
<b>WB:</b>	1:500 - 1:2,000

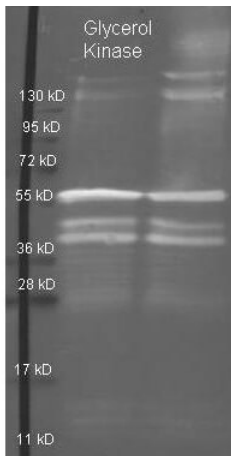
## Formulation

<b>Physical State:</b>	Lyophilized
<b>Concentration:</b>	10.0 mg/mL by UV absorbance at 280 nm
<b>Buffer:</b>	0.02 M Potassium Phosphate, 0.15 M Sodium Chloride, pH 7.2
<b>Preservative:</b>	0.01% (w/v) Sodium Azide
<b>Stabilizer:</b>	10 mg/mL Bovine Serum Albumin (BSA) - Immunoglobulin and Protease free
<b>Reconstitution Volume:</b>	1.0 mL
<b>Reconstitution Buffer:</b>	Restore with deionized water (or equivalent)

## Shipping & Handling

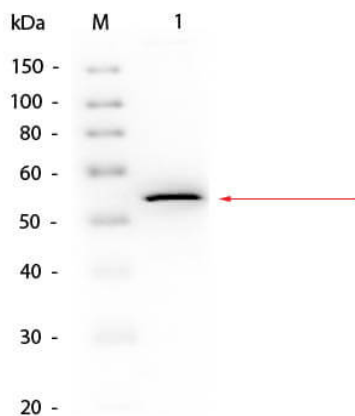
<b>Shipping Condition:</b>	Ambient
<b>Storage Condition:</b>	Store vial at 4° C prior to restoration. For extended storage aliquot contents and freeze at -20° C or below. Avoid cycles of freezing and thawing. Centrifuge product if not completely clear after standing at room temperature. This product is stable for several weeks at 4° C as an undiluted liquid. Dilute only prior to immediate use.
<b>Expiration:</b>	Expiration date is one (1) year from date of receipt.

## Images



### Western Blot

Rockland Goat anti Glycerol Kinase antibody (200-101-211 lot 5912) was used to detect purified Glycerol Kinase under reducing (R) and non-reducing (NR) conditions. Reduced samples of purified protein contained 4% BME and were boiled for 5 minutes. Samples of ~1ug of protein per lane were run by SDS-PAGE. Protein was transferred to nitrocellulose and probed with 1:3000 dilution of primary antibody (ON 4 C in MB-070). Detection shown was using Dylight 488 conjugated Donkey anti goat (605-741-125 lot 21094 1:10K in TBS/MB-070 1 hr RT). Images were collected using the BioRad VersaDoc System.



### Western Blot

Western Blot of Goat anti-Glycerol Kinase Antibody Biotin Conjugated. Lane 1: Glycerol Kinase. Load: 50 ng per lane. Primary antibody: Glycerol Kinase Antibody Biotin Conjugated at 1:1000 overnight at 4°C. Secondary antibody: HRP Streptavidin (p/n S000-03) secondary antibody at 1:40,000 for 30 min at RT. Block: MB-070 for 30 min at RT. Predicted/Observed size: 55 kDa, 55 kDa for Glycerol Kinase.

## Disclaimer

This product is for research use only and is not intended for therapeutic or diagnostic applications. Please contact a technical service representative for more information. All products of animal origin manufactured by Rockland Immunochemicals are derived from starting materials of North American origin. Collection was performed in United States Department of Agriculture (USDA) inspected facilities and all materials have been inspected and certified to be free of disease and suitable for exportation. All properties listed are typical characteristics and are not specifications. All suggestions and data are offered in good faith but without guarantee as conditions and methods of use of our products are beyond our control. All claims must be made within 30 days following the date of delivery. The prospective user must determine the suitability of our materials before adopting them on a commercial scale. Suggested uses of our products are not recommendations to use our products in violation of any patent or as a license under any patent of Rockland Immunochemicals, Inc. If you require a commercial license to use this material and do not have one, then return this material, unopened to: Rockland Inc., P.O. BOX 5199, Limerick, Pennsylvania, USA.