

## Datasheet for 200-106-208

## Plasminogen Antibody Biotin Conjugated

### Overview

<b>Description:</b>	Anti-Plasminogen (Human Plasma) (GOAT) Antibody Biotin Conjugated (BULK ORDER) - 200-106-208
<b>Item No.:</b>	200-106-208
<b>Size:</b>	10 mg
<b>Applications:</b>	ELISA, WB
<b>Reactivity:</b>	Human
<b>Host Species:</b>	Goat

### Product Details

<b>Background:</b>	Anti-Plasminogen antibody recognizes plasminogen, a precursor of plasmin. Plasmin is a serine protease that degrades fibrin clots and involved in embryonic development, tissue remodeling, tumor invasion, and inflammation. In addition to fibrin, Plasmin can also cleave fibronectin, thrombospondin, laminin, and von Willebrand factor. Plasmin can activate other zymogens such as tissue plasminogen activator, urokinase plasminogen activator, kallikrein, and factor XII. Deficiency in plasminogen increases susceptibility to thrombosis.
<b>Synonyms:</b>	goat anti-Plasminogen Antibody, biotin Conjugated goat anti-Plasminogen Antibody, Angiostatin antibody, Microplasmin antibody, Plasmin antibody, Plasmin heavy chain A antibody, Plasmin light chain B antibody, PLG antibody
<b>Host Species:</b>	Goat
<b>Conjugate:</b>	Biotin
<b>Clonality:</b>	Polyclonal
<b>Format:</b>	IgG

### Target Details

<b>Gene Name:</b>	PLG
<b>Reactivity:</b>	Human
<b>Immunogen Type:</b>	Native Protein

<b>Immunogen:</b>	Plasminogen [Human Plasma]
<b>Purity/Specificity:</b>	Anti-Plasminogen antibody is an IgG fraction antibody purified from monospecific antiserum by a multi-step process which includes delipidation, salt fractionation and ion exchange chromatography followed by extensive dialysis against the buffer stated above. Assay by immunoelectrophoresis resulted in a single precipitin arc against anti-Biotin, anti-Goat Serum as well as purified and partially purified Plasminogen [Human Plasma]. Cross reactivity against Plasminogen from other sources is unknown.
<b>Relevant Links:</b>	<ul style="list-style-type: none"><li>• <a href="#">UniProtKB - P00747</a></li><li>• <a href="#">NCBI - P00747.2</a></li><li>• <a href="#">GeneID - 5340</a></li></ul>

## Application Details

<b>Tested Applications:</b>	ELISA, WB
<b>Application Note:</b>	Anti-Plasminogen antibody has been tested by ELISA and western blot. This antibody is assayed against 1.0 ug of Plasminogen in a standard capture ELISA using Peroxidase Conjugated Streptavidin #S000-03 and ABTS (2,2'-azino-bis-[3-ethylbenthiiazoline-6-sulfonic acid]) code # ABTS-100 as a substrate for 30 minutes at room temperature. A working dilution of 1:4,000 to 1:20,000 of the reconstitution concentration is suggested for this product.
<b>Assay Dilutions:</b>	All assays should be optimized by the user. Recommended dilutions (if any) may be listed below.
<b>ELISA:</b>	1:20,000 - 1:100,000
<b>WB:</b>	1:2,000 - 1:10,000

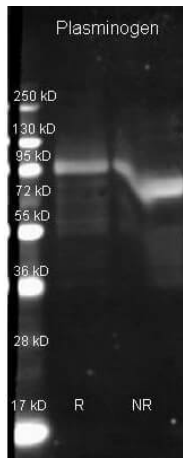
## Formulation

<b>Physical State:</b>	Lyophilized
<b>Concentration:</b>	10.0 mg/mL by UV absorbance at 280 nm
<b>Buffer:</b>	0.02 M Potassium Phosphate, 0.15 M Sodium Chloride, pH 7.2
<b>Preservative:</b>	0.01% (w/v) Sodium Azide
<b>Stabilizer:</b>	10 mg/mL Bovine Serum Albumin (BSA) - Immunoglobulin and Protease free
<b>Reconstitution Volume:</b>	1.0 mL
<b>Reconstitution Buffer:</b>	Restore with deionized water (or equivalent)

## Shipping & Handling

<b>Shipping Condition:</b>	Ambient
<b>Storage Condition:</b>	Store vial at 4° C prior to restoration. For extended storage aliquot contents and freeze at -20° C or below. Avoid cycles of freezing and thawing. Centrifuge product if not completely clear after standing at room temperature. This product is stable for several weeks at 4° C as an undiluted liquid. Dilute only prior to immediate use.
<b>Expiration:</b>	Expiration date is one (1) year from date of receipt.

## Images



### Western Blot

Rockland Goat anti Plasminogen antibody (200-101-208 lot 6571) was used to detect Plasminogen under reducing (R) and non-reducing (NR) conditions. Reduced samples of purified target proteins contained 4% BME and were boiled for 5 minutes. Samples of ~1ug of protein per lane were run by SDS-PAGE. Protein was transferred to nitrocellulose and probed with 1:3000 dilution of primary antibody (ON 4 C in MB-070). Detection shown was using Dylight 649 conjugated Donkey anti goat (605-743-125 lot 20834 1:10K in TBS/MB-070) 1 hr RT. Images were collected using the BioRad VersaDoc System.

## Disclaimer

This product is for research use only and is not intended for therapeutic or diagnostic applications. Please contact a technical service representative for more information. All products of animal origin manufactured by Rockland Immunochemicals are derived from starting materials of North American origin. Collection was performed in United States Department of Agriculture (USDA) inspected facilities and all materials have been inspected and certified to be free of disease and suitable for exportation. All properties listed are typical characteristics and are not specifications. All suggestions and data are offered in good faith but without guarantee as conditions and methods of use of our products are beyond our control. All claims must be made within 30 days following the date of delivery. The prospective user must determine the suitability of our materials before adopting them on a commercial scale. Suggested uses of our products are not recommendations to use our products in violation of any patent or as a license under any patent of Rockland Immunochemicals, Inc. If you require a commercial license to use this material and do not have one, then return this material, unopened to: Rockland Inc., P.O. BOX 5199, Limerick, Pennsylvania, USA.