

Datasheet for 200-103-214

Glucose Dehydrogenase Antibody Peroxidase Conjugated

Overview

Description:	Anti-Glucose Dehydrogenase (GOAT) Antibody Peroxidase Conjugated (BULK ORDER) - 200-103-214
Item No.:	200-103-214
Size:	20 mg
Reactivity:	Bacillus sp.
Host Species:	Goat

Product Details

Background:	Glucose Dehydrogenase belongs to the family of oxidoreductases, specifically those acting on the CH-OH group of donor with NAD ⁺ or NADP ⁺ as acceptor.
Synonyms:	goat anti-Glucose Dehydrogenase Antibody HRP Conjugation, Peroxidase Conjugated goat anti-Glucose Dehydrogenase Antibody, gdh antibody, gdh2 antibody, gdh3 antibody, gdh4 antibody, gdhI antibody, GLCDHIII antibody, GLCDHIV antibody, Glucose 1 dehydrogenase 1 antibody
Host Species:	Goat
Conjugate:	Peroxidase (HRP)
Clonality:	Polyclonal
Format:	IgG

Target Details

Gene Name:	gdhB
Reactivity:	Bacillus sp.
Immunogen Type:	Native Protein
Immunogen:	Glucose Dehydrogenase [Bacillus]

Purity/Specificity: Glucose Dehydrogenase is an IgG fraction antibody purified from monospecific antiserum by a multi-step process which includes delipidation, salt fractionation and ion exchange chromatography followed by extensive dialysis against the buffer stated above. Assay by immunoelectrophoresis resulted in a single precipitin arc against anti-Peroxidase, anti-Goat Serum as well as purified and partially purified Glucose Dehydrogenase [Bacillus]. Cross reactivity against Glucose Dehydrogenase from other sources is unknown.

Relevant Links:

- [UniProtKB - P07999](#)
- [NCBI - AAA22475.1](#)
- [GeneID - 8985276](#)

Application Details

Application Note: Anti-Glucose Dehydrogenase has been assayed against 1.0 µg of Glucose Dehydrogenase [Bacillus] in a standard capture ELISA using ABTS (2,2'-azino-bis-[3-ethylbenthiiazoline-6-sulfonic acid]) code # ABTS-100 as a substrate for 30 minutes at room temperature. A working dilution of 1:1,000 to 1:3,000 of the reconstitution concentration is suggested for this product.

Assay Dilutions: All assays should be optimized by the user. Recommended dilutions (if any) may be listed below.

ELISA: 1:10,000 - 1:40,000

WB: 1:1,000 - 1:5,000

Formulation

Physical State: Lyophilized

Concentration: 10 mg/mL by UV absorbance at 280 nm

Buffer: 0.02 M Potassium Phosphate, 0.15 M Sodium Chloride, pH 7.2

Preservative: 0.01% (w/v) Gentamicin Sulfate. Do NOT add Sodium Azide!

Stabilizer: 10 mg/mL Bovine Serum Albumin (BSA) - Immunoglobulin and Protease free

Reconstitution Volume: 2.0 mL

Reconstitution Buffer: Restore with deionized water (or equivalent)

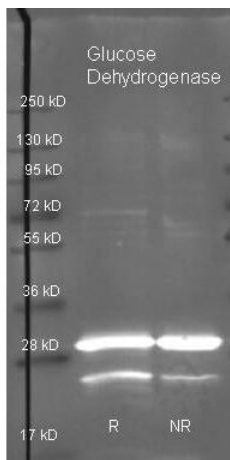
Shipping & Handling

Shipping Condition: Ambient

Storage Condition: Store vial at 4° C prior to restoration. For extended storage aliquot contents and freeze at -20° C or below. Avoid cycles of freezing and thawing. Centrifuge product if not completely clear after standing at room temperature. This product is stable for several weeks at 4° C as an undiluted liquid. Dilute only prior to immediate use.

Expiration: Expiration date is one (1) year from date of receipt.

Images



Western Blot

Rockland Goat anti Glucose Dehydrogenase antibody (100-101-214 lot 6454) was used to detect purified Glucose Dehydrogenase under reducing (R) and non-reducing (NR) conditions. Reduced samples of purified target proteins contained 4% BME and were boiled for 5 minutes. Samples of ~1ug of protein per lane were run by SDS-PAGE. Protein was transferred to nitrocellulose and probed with 1:3000 dilution of primary antibody (ON 4 C in MB-070). Detection shown was using Dylight 488 conjugated Donkey anti goat (605-741-125 lot 21094 1:10K in TBS/MB-070 1 hr RT). Images were collected using the BioRad VersaDoc System

Disclaimer

This product is for research use only and is not intended for therapeutic or diagnostic applications. Please contact a technical service representative for more information. All products of animal origin manufactured by Rockland Immunochemicals are derived from starting materials of North American origin. Collection was performed in United States Department of Agriculture (USDA) inspected facilities and all materials have been inspected and certified to be free of disease and suitable for exportation. All properties listed are typical characteristics and are not specifications. All suggestions and data are offered in good faith but without guarantee as conditions and methods of use of our products are beyond our control. All claims must be made within 30 days following the date of delivery. The prospective user must determine the suitability of our materials before adopting them on a commercial scale. Suggested uses of our products are not recommendations to use our products in violation of any patent or as a license under any patent of Rockland Immunochemicals, Inc. If you require a commercial license to use this material and do not have one, then return this material, unopened to: Rockland Inc., P.O. BOX 5199, Limerick, Pennsylvania, USA.