

Datasheet for 200-101-234S

Glucoamylase Antibody

Overview

Description:	Anti-Glucoamylase (GOAT) Antibody - 200-101-234S
Item No.:	200-101-234S
Size:	25 µL
Applications:	WB
Reactivity:	Rhizopus
Host Species:	Goat

Product Details

Background:	Rhizopus glucoamylase exists in multiple forms, Gluc 1, Gluc 2, and Gluc 3, all of which hydrolyze gelatinized starch at similar rates, but only the largest one (Gluc 1) is able to adsorb raw starch. Hydrolysis of terminal (1->4)-linked alpha-D-glucose residues successively from non-reducing ends of the chains with release of beta-D-glucose.
Synonyms:	goat anti-Glucoamylase Antibody, 1 4 alpha D glucan glucohydrolase antibody, Amyloglucosidase antibody, Gluc 1 antibody, Gluc 2 antibody, Gluc 3 antibody, Glucan 1 4 alpha glucosidase antibody, Glucan 14 alpha glucosidase antibody
Host Species:	Goat
Clonality:	Polyclonal
Format:	IgG

Target Details

Gene Name:	amyA
Reactivity:	Rhizopus
Immunogen Type:	Native Protein
Immunogen:	Glucoamylase [Rhizopus]

Purity/Specificity: Anti-Glucoamylase is an IgG fraction antibody purified from monospecific antiserum by a multi-step process which includes delipidation, salt fractionation and ion exchange chromatography followed by extensive dialysis against the buffer stated above. Assay by immunoelectrophoresis resulted in a single precipitin arc against anti-Goat Serum as well as purified and partially purified Glucoamylase [Rhizopus]. Cross reactivity against Glucoamylase from other sources is unknown.

Relevant Links:

- [UniProtKB - P07683](#)

Application Details

Tested Applications: WB

Application Note: Anti-Glucoamylase Antibody has been tested by western blot and is suitable to be assayed against 1.0 µg of Glucoamylase [Rhizopus] in a standard ELISA using Peroxidase conjugated Affinity Purified anti-Goat IgG [H&L] (Goat) code #611-1302 and (ABTS (2,2'-azino-bis-[3-ethylbenzothiazoline-6-sulfonic acid]) code # ABTS-100 as a substrate for 30 minutes at room temperature. A working dilution of 1:5,000 to 1:25,000 of the reconstitution concentration is suggested for this product.

Assay Dilutions: All assays should be optimized by the user. Recommended dilutions (if any) may be listed below.

ELISA: 1:5,000 - 1:25,000

WB: 1:500 - 1:3,000

Formulation

Physical State: Liquid (sterile filtered)

Concentration: 1.0 mg/ml by UV absorbance at 280 nm

Buffer: 0.02 M Potassium Phosphate, 0.15 M Sodium Chloride, pH 7.2

Preservative: 0.01% (w/v) Sodium Azide

Stabilizer: None

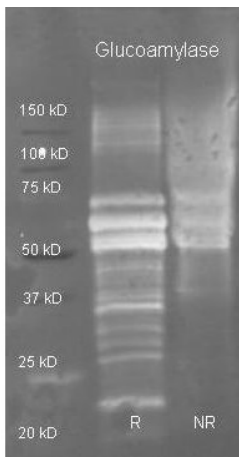
Shipping & Handling

Shipping Condition: Dry Ice

Storage Condition: Store vial at -20° C or below prior to opening. This vial contains a relatively low volume of reagent (25 µL). To minimize loss of volume dilute 1:10 by adding 225 µL of the buffer stated above directly to the vial. Recap, mix thoroughly and briefly centrifuge to collect the volume at the bottom of the vial. Use this intermediate dilution when calculating final dilutions as recommended below. Store the vial at -20°C or below after dilution. Avoid cycles of freezing and thawing.

Expiration: Expiration date is one (1) year from date of receipt.

Images



Western Blot

Rockland Goat anti Glucoamylase antibody (100-101-234 lot 7844) was used to detect purified glucoamylase under reducing (R) and non-reducing (NR) conditions. Reduced samples of purified target proteins contained 4% BME and were boiled for 5 minutes. Samples of ~1µg of protein per lane were run by SDS-PAGE. Protein was transferred to nitrocellulose and probed with 1:3000 dilution of primary antibody (ON 4 C in MB-070). Detection shown was using Dylight 488 conjugated Donkey anti goat (605-741-125 lot 21094 1:10K in TBS/MB-070 1 hr RT) . Images were collected using the BioRad VersaDoc System



Western Blot

Western Blot of Goat Anti-Glucoamylase Antibody. Lane 1: Molecular Weight Marker. Lane 2: detection of Anti-Glucoamylase Antibody.

Disclaimer

This product is for research use only and is not intended for therapeutic or diagnostic applications. Please contact a technical service representative for more information. All products of animal origin manufactured by Rockland Immunochemicals are derived from starting materials of North American origin. Collection was performed in United States Department of Agriculture (USDA) inspected facilities and all materials have been inspected and certified to be free of disease and suitable for exportation. All properties listed are typical characteristics and are not specifications. All suggestions and data are offered in good faith but without guarantee as conditions and methods of use of our products are beyond our control. All claims must be made within 30 days following the date of delivery. The prospective user must determine the suitability of our materials before adopting them on a commercial scale. Suggested uses of our products are not recommendations to use our products in violation of any patent or as a license under any patent of Rockland Immunochemicals, Inc. If you require a commercial license to use this material and do not have one, then return this material, unopened to: Rockland Inc., P.O. BOX 5199, Limerick, Pennsylvania, USA.