

Datasheet for 112-4101**Rat Serum Antibody****Overview**

Description:	Anti-Rat Serum (RABBIT) Antibody - 112-4101
Item No.:	112-4101
Size:	2 mL
Applications:	Cellular Assay
Reactivity:	Rat
Host Species:	Rabbit

Product Details

Background:	Anti-Rat Serum Antibody is specific for the components found in rat serum. Rat Serum provides a broad spectrum of macromolecules, carrier proteins for lipoid substances and trace elements, attachment and spreading factors, low molecular weight nutrients, and hormones and growth factors that promote cell growth and health. Anti-Rat serum antibody is suitable for use in veterinary research and biotechnology applications and is ideal for investigators in Cancer and Cell Biology.
Synonyms:	rabbit Anti-rat whole serum, rabbit anti-rat serum, anti-serum, detect rat serum proteins
Host Species:	Rabbit
Clonality:	Polyclonal
Format:	Antiserum

Target Details

Reactivity:	Rat
Immunogen Type:	Native Protein
Immunogen:	Rat Serum Proteins
Purity/Specificity:	This product was prepared from polyspecific antiserum by a delipidation and defibrination. Assay by immunoelectrophoresis resulted in multiple precipitin arcs against Rat Serum.

Application Details

Suggested Applications:	Cellular Assay (Based on references)
Application Note:	Anti-Rat serum antibody is suitable for use in ELISA and western blot. Specific conditions for reactivity should be optimized by the end user
Assay Dilutions:	All assays should be optimized by the user. Recommended dilutions (if any) may be listed below.
ELISA:	User Optimized
WB:	User Optimized

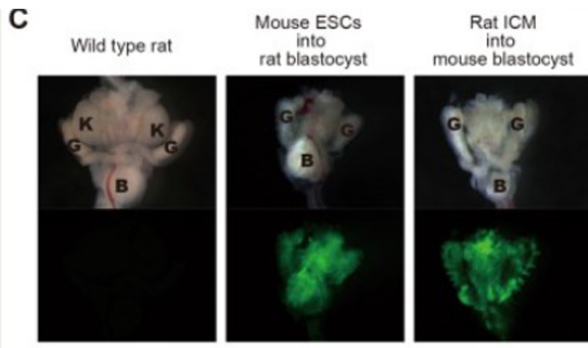
Formulation

Physical State:	Lyophilized
Concentration:	75 mg/mL by Refractometry
Buffer:	0.02 M Potassium Phosphate, 0.15 M Sodium Chloride, pH 7.2
Preservative:	None
Stabilizer:	None
Reconstitution Volume:	2.0 mL
Reconstitution Buffer:	Restore with deionized water (or equivalent)

Shipping & Handling

Shipping Condition:	Ambient
Storage Condition:	Store vial at 4° C prior to restoration. For extended storage aliquot contents and freeze at -20° C or below. Avoid cycles of freezing and thawing. Centrifuge product if not completely clear after standing at room temperature. This product is stable for several weeks at 4° C as an undiluted liquid. Dilute only prior to immediate use.
Expiration:	Expiration date is one (1) year from date of receipt.

Images



Immunofluorescence Microscopy

For preparation of donor ICM, immunosurgery of rat blastocysts was performed. Briefly, the zonae pellucidiae were removed from E5.5 rat blastocysts with acidic Tyrode's solution. 20% anti-rat whole serum (p/n 112-4101) /DMEM for 3 hr. The blastocysts were washed once with DMEM and incubated for 20 min in 100% rat serum as the complement source. The trophectoderm cells were removed by gentle pipetting.

(C) Bright field images (upper) and fluorescent images (lower) of urinary organs in wild type rat (left), interspecies chimera generated by injection of mouse ESCs into rat blastocyst (middle), and interspecies chimera generated by injection of rat inner cell mass (ICM) into mouse blastocyst (right). Fig 4. PMID: 30327488

References

- Yamaguchi et al. An interspecies barrier to tetraploid complementation and chimera formation. *Scientific Reports* (2018)

Disclaimer

This product is for research use only and is not intended for therapeutic or diagnostic applications. Please contact a technical service representative for more information. All products of animal origin manufactured by Rockland Immunochemicals are derived from starting materials of North American origin. Collection was performed in United States Department of Agriculture (USDA) inspected facilities and all materials have been inspected and certified to be free of disease and suitable for exportation. All properties listed are typical characteristics and are not specifications. All suggestions and data are offered in good faith but without guarantee as conditions and methods of use of our products are beyond our control. All claims must be made within 30 days following the date of delivery. The prospective user must determine the suitability of our materials before adopting them on a commercial scale. Suggested uses of our products are not recommendations to use our products in violation of any patent or as a license under any patent of Rockland Immunochemicals, Inc. If you require a commercial license to use this material and do not have one, then return this material, unopened to: Rockland Inc., P.O. BOX 5199, Limerick, Pennsylvania, USA.