

Datasheet for 109-401-C39**HICE1 Antibody****Overview**

Description:	Anti-HICE1 (RABBIT) Antibody - 109-401-C39
Item No.:	109-401-C39
Size:	100 µL
Applications:	ELISA, WB
Reactivity:	Human
Host Species:	Rabbit

Product Details

Background: This antibody is designed, produced, and validated as part of a collaboration between Rockland and the National Cancer Institute (NCI) and is suitable for Cancer, Immunology and Nuclear Signaling research. Hice1 contributes to the mitotic spindle assembly, maintenance of centrosome integrity and completion of cytokinesis as part of the HAUS augmin-like complex. Normal bipolar spindle formation is critical for accurate chromosome segregation and proper mitotic progression. Failure in this event leads to spindle checkpoint activation and chromosome missegregation that ultimately leads to aneuploidy. Hice1 binds to microtubules directly, and promotes spindle integrity and chromosome stability. Hice1 has also shown to play an important role in targeting the gamma TuRC complex to the mitotic spindle, a step that appears to be required for spindle-mediated microtubule generation and normal chromosome segregation. The HAUS augmin-like complex's interaction with microtubules is strong during mitosis, while it is weak or absent during interphase. During interphase, it is primarily cytoplasmic, associating with centrosomes and with the mitotic spindles, preferentially at the spindle pole vicinity. During anaphase and telophase, it additionally associates with the spindle midzone and midbody, respectively. Further characterization of the function of Hice1 will likely be important for better understanding the mechanism of normal mitotic progression and high fidelity chromosome segregation.

Synonyms:	HAUS8, HAUS augmin-like complex subunit 8, HEC1/NDC80-interacting centrosome-associated protein 1, Sarcoma antigen NY-SAR-48, rabbit anti-HICE1 Antibody
Host Species:	Rabbit
Clonality:	Polyclonal
Format:	Antiserum

Target Details

Gene Name:	HAUS8
Reactivity:	Human
Immunogen Type:	Recombinant Protein
Immunogen:	Anti-HICE1 was prepared from whole rabbit serum produced by repeated immunizations with a recombinant full length Hice1 protein.
Purity/Specificity:	This product was adsorbed against GST from monospecific antiserum by immunoaffinity chromatography. This antibody reacts with endogenous Hice1 protein. A BLAST analysis was used to suggest reactivity with Hice1 from human based on a 100% homology with the immunizing sequence. Expect reactivity with Hice1 from chimpanzee, Sumatran orangutan based on a 90% homology with the immunizing sequence. Cross-reactivity with Hice1 from other sources has not been determined.
Relevant Links:	<ul style="list-style-type: none">• NCBI - NP_219485• UniProtKB - Q9BT25• GeneID - 93323

Application Details

Tested Applications:	ELISA, WB
Application Note:	This antiserum has been tested for use in ELISA and western blotting using a full length recombinant Hice1 protein. Specific conditions for reactivity and detection of Hice1 should be optimized by the end user. Expect a band approximately ~45 kDa in size corresponding to Hice1 by Western Blotting in the appropriate cell lysate or extract.
Assay Dilutions:	All assays should be optimized by the user. Recommended dilutions (if any) may be listed below.
ELISA:	1:250,000
WB:	1:10,000

Formulation

Physical State:	Liquid (sterile filtered)
Concentration:	38 mg/mL by Refractometry
Buffer:	0.02 M Potassium Phosphate, 0.15 M Sodium Chloride, pH 7.2
Preservative:	0.01% (w/v) Sodium Azide

Stabilizer: None

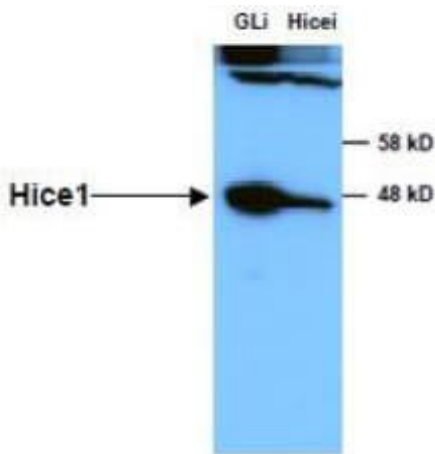
Shipping & Handling

Shipping Condition: Dry Ice

Storage Condition: Store vial at -20° C prior to opening. Aliquot contents and freeze at -20° C or below for extended storage. Avoid cycles of freezing and thawing. Centrifuge product if not completely clear after standing at room temperature. This product is stable for several weeks at 4° C as an undiluted liquid. Dilute only prior to immediate use.

Expiration: Expiration date is one (1) year from date of receipt.

Images



Western Blot

Anti-HICE1 in Western Blot using Rockland Immunochemicals' Anti-HICE1 Antibody shows detection of a 45 kDa band corresponding to endogenous HICE1 in lysates of S phase HeLa cells silenced for either control Luciferase or HICE1. In right lane (HICE1i): lysates from sh-HICE1 RNAi-treated lentivirus-infected cells. In left lane (GLI): lysates from sh-Luciferase lentivirus-infected cells as control. Anti-HICE1 Antibody was used at 1:10,000. Molecular weight estimation was made by comparison by prestained MW markers. ECL was used for detection. Personal communication, Kyung S. Lee, NCI, Bethesda, MD.

Disclaimer

This product is for research use only and is not intended for therapeutic or diagnostic applications. Please contact a technical service representative for more information. All products of animal origin manufactured by Rockland Immunochemicals are derived from starting materials of North American origin. Collection was performed in United States Department of Agriculture (USDA) inspected facilities and all materials have been inspected and certified to be free of disease and suitable for exportation. All properties listed are typical characteristics and are not specifications. All suggestions and data are offered in good faith but without guarantee as conditions and methods of use of our products are beyond our control. All claims must be made within 30 days following the date of delivery. The prospective user must determine the suitability of our materials before adopting them on a commercial scale. Suggested uses of our products are not recommendations to use our products in violation of any patent or as a license under any patent of Rockland Immunochemicals, Inc. If you require a commercial license to use this material and do not have one, then return this material, unopened to: Rockland Inc., P.O. BOX 5199, Limerick, Pennsylvania, USA.