

Datasheet for 109-401-312-0100**IL-10 Antibody****Overview**

Description:	Anti-Human IL-10 (RABBIT) Antibody - 109-401-312-0100
Item No.:	109-401-312-0100
Size:	100 µL
Applications:	WB
Reactivity:	Human
Host Species:	Rabbit

Product Details

Background: Anti-IL-10 Antibody recognizes IL-10 (IL-10 or IL10), also known as human cytokine synthesis inhibitory factor (CSIF), that is an anti-inflammatory cytokine. In humans IL-10 is encoded by the IL10 gene. IL-10 is produced primarily by monocytes and to a lesser extent by lymphocytes. This cytokine has pleiotropic effects in immunoregulation and inflammation. It down-regulates the expression of Th1 cytokines, MHC class II antigens, and costimulatory molecules on macrophages. It also enhances B cell survival, proliferation, and antibody production. IL-10 can block NF-κB activity, and is involved in the regulation of the JAK-STAT signaling pathway. Knockout studies in mice suggested the function of this cytokine as an essential immunoregulator in the intestinal tract and indeed patients with Crohn's disease react favorably towards treatment with bacteria producing recombinant interleukin 10, showing the importance of interleukin 10 for counteracting excessive immunity in the human body. Anti-IL-10 cytokine antibody is ideal for investigators involved Immunology and Signal Transduction research.

Synonyms: CSIF antibody, Cytokine Synthesis Inhibitory Factor antibody, IL 10 antibody, IL10A antibody, rabbit anti-interleukin 10 antibody, rabbit anti-IL-10, Interleukin10 antibody, MGC126450 antibody, MGC126451 antibody, TGIF antibody

Host Species: Rabbit

Clonality: Polyclonal

Format: Antiserum

Target Details

Gene Name: IL10

Reactivity:	Human
Immunogen Type:	Native Protein
Immunogen:	The whole rabbit serum was prepared by repeated immunizations with human IL-10.
Purity/Specificity:	The antiserum detects recombinant and native IL-10 present in body fluids and cell supernatants in various assays (ie. IL-1 stimulated IL-10 production from fibroblasts). The antibody recognizes hu IL-10. The antibody will not neutralize the biological activity of murine IL-10.
Relevant Links:	<ul style="list-style-type: none">• UniProtKB - P22301• NCBI - P22301.1• GeneID - 3586

Application Details

Tested Applications:	WB
Application Note:	IL-10 antiserum has been tested for use in immunoblotting. Although not tested, this antibody may be useful in radioimmunoassay, neutralizations, immunoprecipitation, ELISA and immunohistochemistry. Reactivity in other immunoassays is unknown. In Western blot analysis of natural cell products or human body fluids, multiple bands of IL-10 will appear due to the variable amount of glycosylation on the molecule. The antiserum is also useful for neutralization of human of IL-10 activity in bioassays. For neutralization, incubate the sample with a 1:400 dilution of the antiserum for at least 4 hours before being tested. A control of similarly diluted normal rabbit IgG (heat inactivated) is recommended.
Assay Dilutions:	All assays should be optimized by the user. Recommended dilutions (if any) may be listed below.
ELISA:	1:20,000 - 1:100,000
WB:	1:2,000 - 1:10,000

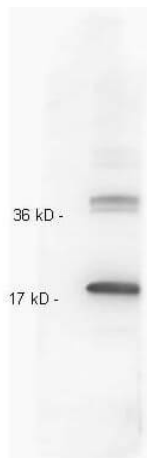
Formulation

Physical State:	Liquid (sterile filtered)
Concentration:	85 mg/mL by Refractometry
Buffer:	None
Preservative:	0.01% (w/v) Sodium Azide
Stabilizer:	None

Shipping & Handling

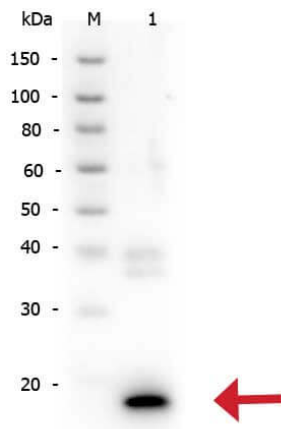
Shipping Condition:	Dry Ice
Storage Condition:	Store vial at -20° C prior to opening. Aliquot contents and freeze at -20° C or below for extended storage. Avoid cycles of freezing and thawing. Centrifuge product if not completely clear after standing at room temperature. This product is stable for several weeks at 4° C as an undiluted liquid. Dilute only prior to immediate use.
Expiration:	Expiration date is one (1) year from date of receipt.

Images



Western Blot

Rockland Anti IL-10 whole antiserum (109-401-312) was tested against recombinant IL10. Recombinant IL-10 was run on a 4-20% reducing gel, and transferred to nitrocellulose. Membrane was blocked in 3% BSA-TBS for 1 Hour 4°C and probed with (p/n 109-401-312) diluted 1:200 in 3% BSA-TBS o/n 4°C. Primary antibody was detected with HRP Gt anti-Rb (611-103-122) Lot#21231 1:20,000 in MB-070 1 Hour 4°C using FemtoMax Super sensitive chemiluminescent substrate. Blot was imaged with VersaDoc Imaging system by Biorad. Other detection systems will yield similar results.



Western Blot

Western Blot of Rabbit anti-IL-10 antibody. Lane 1: Recombinant Human IL-10. Load: 50 ng per lane. Primary antibody: IL-10 antibody at 1:500 for overnight at 4°C. Secondary antibody: Peroxidase rabbit secondary antibody (p/n 611-103-122) at 1:40,000 for 30 min at RT. Block: Blocking Buffer for Fluorescent Western Blotting (MB-070) for 30 min at RT. Predicted/Observed size: 17 kDa, 17 kDa for IL-10.

Disclaimer

This product is for research use only and is not intended for therapeutic or diagnostic applications. Please contact a technical service representative for more information. All products of animal origin manufactured by Rockland Immunochemicals are derived from starting materials of North American origin. Collection was performed in United States Department of Agriculture (USDA) inspected facilities and all materials have been inspected and certified to be free of disease and suitable for exportation. All properties listed are typical characteristics and are not specifications. All suggestions and data are offered in good faith but without guarantee as conditions and methods of use of our products are beyond our control. All claims must be made within 30 days following the date of delivery. The prospective user must determine the suitability of our materials before adopting them on a commercial scale. Suggested uses of our products are not recommendations to use our products in violation of any patent or as a license under any patent of Rockland Immunochemicals, Inc. If you require a commercial license to use this material and do not have one, then return this material, unopened to: Rockland Inc., P.O. BOX 5199, Limerick, Pennsylvania, USA.