

Datasheet for 100-4195

Streptavidin Antibody

Overview

Description:	Anti-Streptavidin (RABBIT) Antibody - 100-4195
Item No.:	100-4195
Size:	2 mL
Applications:	Dot Blot, ELISA, WB, IF
Reactivity:	Streptavidin
Host Species:	Rabbit

Product Details

Background:	Anti-streptavidin antibody detects Streptavidin, a 60 kDa protein purified from the bacterium <i>Streptomyces avidinii</i> . Streptavidin is a homo-tetrameric protein having a very high affinity for biotin (vitamin B7). Streptavidin bound biotin has a dissociation constant (Kd) on the order of about 10^{-14} mol/L. Streptavidin and biotin are used extensively in molecular biology and bionanotechnology due to the resistance of streptavidin-biotin complex to organic solvents, denaturants (e.g. guanidinium chloride), detergents (e.g. SDS, Triton), proteolytic enzymes, and extremes of temperature and pH.
Synonyms:	rabbit anti-Streptavidin Antibody, rabbit anti Streptavidin
Host Species:	Rabbit
Clonality:	Polyclonal
Format:	Antiserum

Target Details

Reactivity:	Streptavidin
Immunogen Type:	Native Protein
Immunogen:	Streptavidin (<i>Streptomyces avidinii</i>)
Purity/Specificity:	Anti-STREPTAVIDIN antibody was prepared from monospecific antiserum by a delipidation and defibrination. Assay by immunoelectrophoresis resulted in a single precipitin arc against anti-rabbit serum, purified and partially purified Streptavidin. No cross reactivity occurs against Avidin.

Application Details

Tested Applications:	Dot Blot, ELISA, WB
Suggested Applications:	IF (Based on references)
Application Note:	Anti-Streptavidin Antibody has been tested by ELISA, western blot, and dot blot and is suitable for immunoprecipitation and most immunological methods requiring high titer and specificity.
Assay Dilutions:	All assays should be optimized by the user. Recommended dilutions (if any) may be listed below.
ELISA:	1:20,000-1:100,000
IHC:	1:1,000-1:5,000
WB:	1:2,000-1:10,000

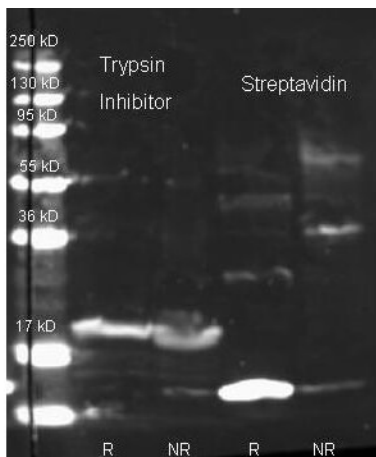
Formulation

Physical State:	Lyophilized
Concentration:	95 mg/mL by Refractometry
Buffer:	0.02 M Potassium Phosphate, 0.15 M Sodium Chloride, pH 7.2
Preservative:	0.01% (w/v) Sodium Azide
Stabilizer:	None
Reconstitution Volume:	2.0 mL
Reconstitution Buffer:	Restore with deionized water (or equivalent)

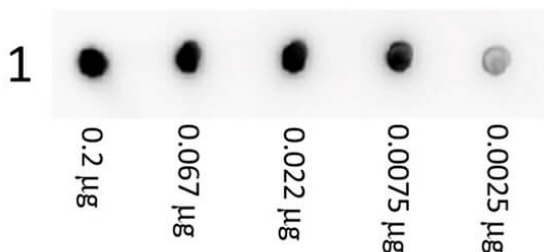
Shipping & Handling

Shipping Condition:	Ambient
Storage Condition:	Store vial at 4° C prior to restoration. For extended storage aliquot contents and freeze at -20° C or below. Avoid cycles of freezing and thawing. Centrifuge product if not completely clear after standing at room temperature. This product is stable for several weeks at 4° C as an undiluted liquid. Dilute only prior to immediate use.
Expiration:	Expiration date is one (1) year from date of receipt.

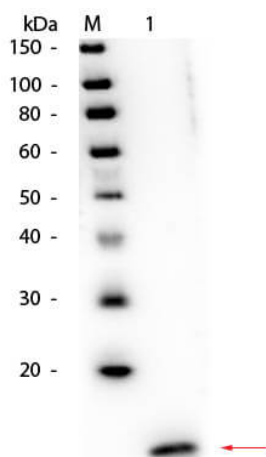
Images


Western Blot

Rockland Rabbit anti Streptavidin (200-4195 lot 23495) and Biotin conjugated Rabbit anti-trypsin inhibitor antibody (200-4679 lot 6594) were used to detect target proteins Trypsin Inhibitor (left) and Streptavidin (right) under reducing (R) and non-reducing (NR) conditions. Reduced samples of purified target proteins contained 4% BME and were boiled for 5 minutes. Samples of ~1ug of protein per lane were run by SDS-PAGE. Protein was transferred to nitrocellulose and probed with 1:1000 dilution of primary antibody (ON 4 C). Detection shown was using Dylight 649 conjugated Donkey anti rabbit (611-743-127 lot 20831 1:10K 1.5 hr RT in MB-070) and imaged on the BioRad VersaDoc System


Dot Blot

Dot Blot showing the detection of Streptavidin. A three-fold serial dilution of DyLight™ 488 Conjugated Streptavidin starting at 200ng was spotted onto 0.45 µm nitrocellulose and blocked in 1% BSA-TTBS (p/n MB-013, diluted to 1X) 30 min at 20°C. Anti-Streptavidin (RABBIT) Antibody (p/n 100-4195) was incubated in Blocking Buffer for Fluorescent Western Blotting (p/n MB-070) at 1:1,000 for 1 Hour at 20°C. An HRP Gt-a-Rb secondary antibody (p/n 611-103-122) was incubated at 1:40,000 for 30 min at 20°C and imaged using the Bio-Rad VersaDoc® 4000 MP.


Western Blot

Western Blot of Rabbit anti-Streptavidin Antibody. Lane 1: Streptavidin. Load: 50 ng per lane. Primary antibody: Rabbit anti-Streptavidin Antibody at 1:1,000 overnight at 4°C. Secondary antibody: HRP rabbit secondary antibody (p/n 611-103-122) at 1:40,000 for 30 min at RT. Block: MB-070 for 30 min at RT. Predicted/Observed size: 13.8 kDa, 13.8 kDa. Streptavidin exhibits a homotetramer structure with four essentially identical polypeptide chains. Pictured is reduced protein.

References

- Boyer CK et al. Synchronized proinsulin trafficking reveals delayed Golgi export accompanies β -cell secretory dysfunction in a rodent model of hyperglycemia. *bioRxiv Preprint* (2022)

Disclaimer

This product is for research use only and is not intended for therapeutic or diagnostic applications. Please contact a technical service representative for more information. All products of animal origin manufactured by Rockland Immunochemicals are derived from starting materials of North American origin. Collection was performed in United States Department of Agriculture (USDA) inspected facilities and all materials have been inspected and certified to be free of disease and suitable for exportation. All properties listed are typical characteristics and are not specifications. All suggestions and data are offered in good faith but without guarantee as conditions and methods of use of our products are beyond our control. All claims must be made within 30 days following the date of delivery. The prospective user must determine the suitability of our materials before adopting them on a commercial scale. Suggested uses of our products are not recommendations to use our products in violation of any patent or as a license under any patent of Rockland Immunochemicals, Inc. If you require a commercial license to use this material and do not have one, then return this material, unopened to: Rockland Inc., P.O. BOX 5199, Limerick, Pennsylvania, USA.