

## Datasheet for 100-401-W92

## Alpha II Spectrin Antibody

### Overview

<b>Description:</b>	Anti-Alpha II Spectrin (RABBIT) Polyclonal Antibody - 100-401-W92
<b>Item No.:</b>	100-401-W92
<b>Size:</b>	100 µL
<b>Applications:</b>	IHC, WB
<b>Reactivity:</b>	Human, Mouse, Rat
<b>Host Species:</b>	Rabbit

### Product Details

<b>Background:</b>	The spectrin family of cytoskeletal proteins is comprised of 2 alpha genes ( $\alpha 1$ and $\alpha 2$ ) and five beta genes ( $\beta 1$ - $\beta 5$ ). Spectrins have been shown to function as scaffolding proteins in mechanical support of the plasma membrane as well as bind other membrane proteins and lipids (Bennett and Baines 2001). Defects in spectrin genes have been linked to some forms of hereditary spherocytosis, a type of auto-hemolytic anemia which is characterized by spherical red blood cells that are more prone to lysis. Alpha II Spectrin Antibody is ideal for researchers interested in cell cycle research.
<b>Synonyms:</b>	Spectrin alpha chain non-erythrocytic 1, Fodrin alpha chain, Spectrin nonerythroid alpha subunit
<b>Host Species:</b>	Rabbit
<b>Clonality:</b>	Polyclonal
<b>Format:</b>	Antiserum

### Target Details

<b>Gene Name:</b>	SPTAN1
<b>Reactivity:</b>	Human, Mouse, Rat
<b>Immunogen Type:</b>	Recombinant Protein
<b>Immunogen:</b>	Anti-Alpha II Spectrin Antibody was produced in rabbits by repeated immunizations with a recombinant construct containing the 7th, 8th, 9th repeats of human alpha II spectrin expressed in and purified from E. coli.

**Purity/Specificity:** Anti-Alpha II Spectrin Antibody was purified in a neat serum.

**Relevant Links:**

- [UniProtKB - Q13813](#)
- [GeneID - 6709](#)
- [NCBI - NP\\_001123910](#)

## Application Details

**Tested Applications:** IHC, WB

**Application Note:** Anti-Alpha II Spectrin Antibody is stored as a neat serum. It is tested for Western Blot, immunohistochemistry, and immunocytochemistry. Expect a band at approximately ~240 kDa on specific lysates or tissues. Specific conditions for reactivity should be optimized by the end user.

**Assay Dilutions:** All assays should be optimized by the user. Recommended dilutions (if any) may be listed below.

**ELISA:** 1:50,000

**IHC:** 1:500-1:1000

**WB:** 1:3000

## Formulation

**Physical State:** Liquid (sterile filtered)

**Buffer:** None

**Preservative:** None

**Stabilizer:** None

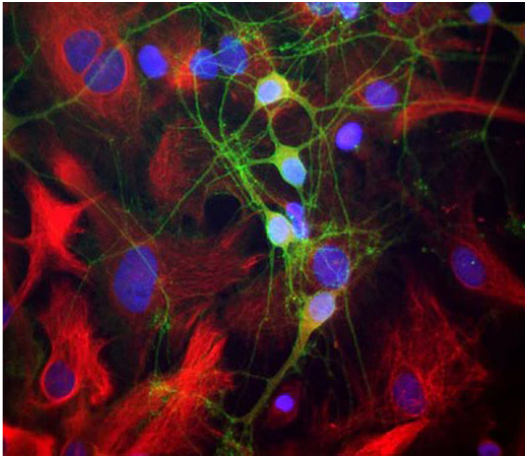
## Shipping & Handling

**Shipping Condition:** Wet Ice

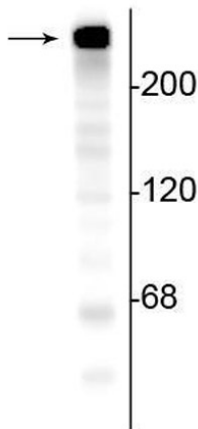
**Storage Condition:** Store vial at -20° C prior to opening in undiluted aliquots. Aliquot contents and freeze at -20° C or below for extended storage. Avoid cycles of freezing and thawing. Centrifuge product if not completely clear after standing at room temperature. Dilute only prior to immediate use.

**Expiration:** Expiration date is one (1) year from date of receipt.

## Images

**Immunofluorescence Microscopy**

Immunofluorescence of cultured neurons and glia cells showing specific labeling of neuronal perikarya, axons and dendrites with anti-alpha-II-spectrin (p/n100-401-W92, 1:1000, green), specific labeling of intermediate filaments in glial and fibroblastic cells with anti-vimentin (1:5000, red) and nuclear staining with DAPI (blue).

**Western Blot**

Western Blot of anti-alpha-II-spectrin antibody. Mouse brain lysate showing specific immunolabeling of the ~240 kDa alpha II spectrin protein.

**Disclaimer**

This product is for research use only and is not intended for therapeutic or diagnostic applications. Please contact a technical service representative for more information. All products of animal origin manufactured by Rockland Immunochemicals are derived from starting materials of North American origin. Collection was performed in United States Department of Agriculture (USDA) inspected facilities and all materials have been inspected and certified to be free of disease and suitable for exportation. All properties listed are typical characteristics and are not specifications. All suggestions and data are offered in good faith but without guarantee as conditions and methods of use of our products are beyond our control. All claims must be made within 30 days following the date of delivery. The prospective user must determine the suitability of our materials before adopting them on a commercial scale. Suggested uses of our products are not recommendations to use our products in violation of any patent or as a license under any patent of Rockland Immunochemicals, Inc. If you require a commercial license to use this material and do not have one, then return this material, unopened to: Rockland Inc., P.O. BOX 5199, Limerick, Pennsylvania, USA.