

Datasheet for 100-401-V99**PAPOLA Antibody****Overview**

Description:	Anti-PAPOLA (RABBIT) Antibody - 100-401-V99
Item No.:	100-401-V99
Size:	100 µL
Applications:	ELISA, WB
Reactivity:	Human
Host Species:	Rabbit

Product Details

Background:	PAPOLA is an RNA polymerase that generates the poly(A) tail of RNA's by adding AMP monomers to the 3'-end. PAPOLA may also be required for the endoribonucleolytic cleavage reaction at some polyadenylation sites. Anti-PAPOLA Antibody is ideal for research in Gene Expression, Transcription and Translation.
Synonyms:	Poly(A) polymerase alpha, PAP-alpha, Polynucleotide adenylyltransferase alpha, PAP
Host Species:	Rabbit
Clonality:	Polyclonal
Format:	Antiserum

Target Details

Gene Name:	PAPOLA
Reactivity:	Human
Immunogen Type:	Conjugated Peptide
Immunogen:	Anti-PAPOLA Antibody was produced in rabbits by repeated immunizations with a synthetic peptide of human PAPOLA containing an amino acid sequence from the C-terminus of the protein.
Purity/Specificity:	Anti-PAPOLA Antibody is monospecific antiserum processed by delipidation and defibrination followed by sterile filtration. Cross reactivity with PAPOLA from other species not tested.
Relevant Links:	<ul style="list-style-type: none">• UniProtKB - P51003

- [GenelD - 10914](#)
- [NCBI - NP_001238935.1](#)

Application Details

Tested Applications:	ELISA, WB
Application Note:	Anti-PAPOLA Antibody has been tested by ELISA and Western Blots. Specific conditions for reactivity should be optimized by the end user. Expect a band approximately 83 kDa in the appropriate cell lysate or extract.
Assay Dilutions:	All assays should be optimized by the user. Recommended dilutions (if any) may be listed below.
ELISA:	1:100 - 1:500
WB:	1:1,000

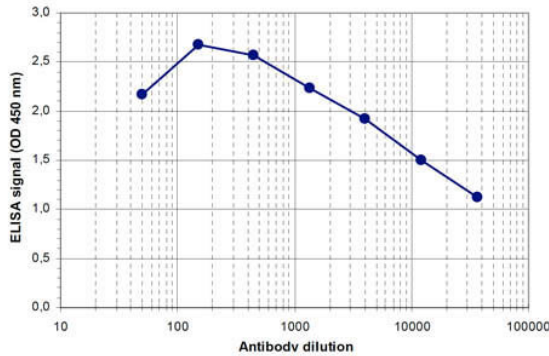
Formulation

Physical State:	Liquid (sterile filtered)
Concentration:	neat
Buffer:	None
Preservative:	0.05% (w/v) Sodium Azide
Stabilizer:	None

Shipping & Handling

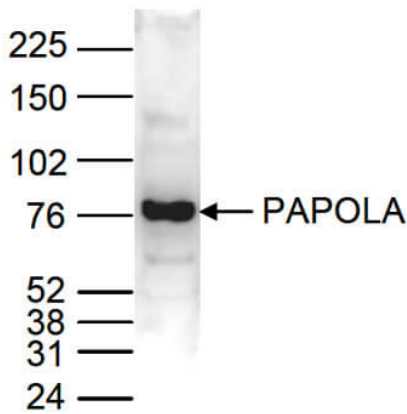
Shipping Condition:	Dry Ice
Storage Condition:	Store vial at -20° C prior to opening. Aliquot contents and freeze at -20° C or below for extended storage. Avoid cycles of freezing and thawing. Centrifuge product if not completely clear after standing at room temperature. This product is stable for several weeks at 4° C as an undiluted liquid. Dilute only prior to immediate use.
Expiration:	Expiration date is one (1) year from date of receipt.

Images



ELISA

ELISA results of Rabbit anti-PAPOLA antibody. Antigen: BSA conjugated PAPOLA. Coating amount: 0.1 µg per well. Dilution series: serial dilution. Estimated Antibody Titer to be 1:22,500. Substrate: TMB (p/n TMBE-1000).



Western Blot

Western Blot results of Rabbit anti-PAPOLA antibody. Lane 1: HeLa nuclear extract cells. Load: 40 µg per lane. Primary antibody: PAPOLA antibody at 1:1,000 for overnight at 4°C. Secondary antibody: goat anti-rabbit HRP secondary antibody at 1:10,000 for 45 min at RT. Block: 5% Blotto/TBS-Tween overnight at 4°C. Predicted: 83kDa.

Disclaimer

This product is for research use only and is not intended for therapeutic or diagnostic applications. Please contact a technical service representative for more information. All products of animal origin manufactured by Rockland Immunochemicals are derived from starting materials of North American origin. Collection was performed in United States Department of Agriculture (USDA) inspected facilities and all materials have been inspected and certified to be free of disease and suitable for exportation. All properties listed are typical characteristics and are not specifications. All suggestions and data are offered in good faith but without guarantee as conditions and methods of use of our products are beyond our control. All claims must be made within 30 days following the date of delivery. The prospective user must determine the suitability of our materials before adopting them on a commercial scale. Suggested uses of our products are not recommendations to use our products in violation of any patent or as a license under any patent of Rockland Immunochemicals, Inc. If you require a commercial license to use this material and do not have one, then return this material, unopened to: Rockland Inc., P.O. BOX 5199, Limerick, Pennsylvania, USA.