

Datasheet for 100-401-H59**BG37 Antibody****Overview**

Description:	Anti-BG37 (RABBIT) Antibody - 100-401-H59
Item No.:	100-401-H59
Size:	100 µL
Applications:	WB
Reactivity:	Human, Mouse, Rat
Host Species:	Rabbit

Product Details

Background:	Anti-BG37 TGR5 Antibody detects human BG37tgr5. BG37 is a 330 amino acid novel enzyme with seven transmembrane domains. It belongs to the G protein-coupled receptor (GPCR) superfamily and functions as a cell surface receptor for bile acids. Cells expressing BG37 when treated with bile acids induce the production of intracellular cAMP, activate the MAP kinase signaling pathway, leads to the internalization of the receptor and regulates proglucagon gene expression in enteroendocrine cells. The receptor is implicated in the suppression of macrophage functions and regulation of energy homeostasis by bile acids that can be targeted to improve metabolic control. It is known to be ubiquitously expressed in most of the tissues. Anti-BG37 TGR5 Antibody is ideal for investigators involved in kinase, phosphatase, and NFkappaB research.
Synonyms:	TGR5, G-protein coupled bile acid receptor 1, G-protein coupled receptor GPCR19, hGPCR19, Membrane-type receptor for bile acids, M-BAR, hBG37, BG37
Host Species:	Rabbit
Clonality:	Polyclonal
Format:	Antiserum

Target Details

Gene Name:	GPBAR1
Reactivity:	Human, Mouse, Rat
Immunogen Type:	Conjugated Peptide

Immunogen:	BG37 Antibody was produced from whole rabbit serum which was prepared by repeated immunizations with the amino acid portion of human BG37 near the C-terminus of the chain .
Purity/Specificity:	Anti-BG37 Antibody is sera. A BLAST analysis was used to suggest cross-reactivity with BG37 from human and mouse based on 100% homology with the immunizing sequence. Predicted reactivity with cow. Cross-reactivity with BG37 from other sources has not been determined.
Relevant Links:	<ul style="list-style-type: none">• UniProtKB - Q8TDU6• NCBI - NP_001070659.1• GeneID - 151306

Application Details

Tested Applications:	WB
Application Note:	Anti-BG37 Antibody has been tested in WB. Expect a band approximately 37kDa on specific lysates. Specific conditions for reactivity should be optimized by the end user.
Assay Dilutions:	All assays should be optimized by the user. Recommended dilutions (if any) may be listed below.
WB:	1:1000-1:5000

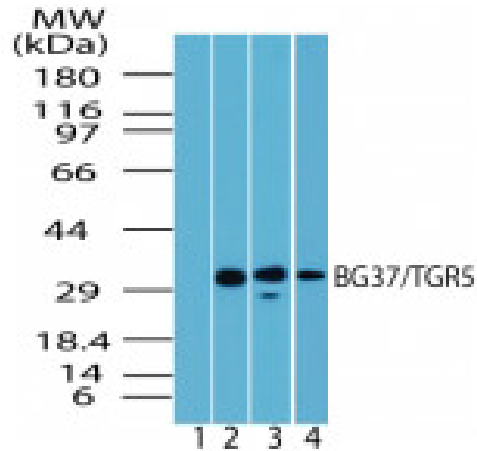
Formulation

Physical State:	Liquid
Preservative:	0.02% (w/v) Sodium Azide

Shipping & Handling

Shipping Condition:	Dry Ice
Storage Condition:	Store vial at -20° C prior to opening. Aliquot contents and freeze at -20° C or below for extended storage. Avoid cycles of freezing and thawing. Centrifuge product if not completely clear after standing at room temperature. This product is stable for several weeks at 4° C as an undiluted liquid. Dilute only prior to immediate use.
Expiration:	Expiration date is one (1) year from date of receipt.

Images



Western Blot

Western Blot of Rabbit anti-BG37 antibody. Lane 1: spleen lysate. Lane 2: human spleen lysate. Lane 3: mouse spleen lysate. Lane 4: rat spleen lysate. Load: 35 µg per lane. Primary antibody: BG37/TGR5 antibody at 1:1000 (hu) and 1:5000 (ms, rt) for overnight at 4°C. Secondary antibody: IRDye800™ rabbit secondary antibody at 1:10,000 for 45 min at RT. Block: 5% BLOTTO overnight at 4°C. Predicted/Observed size: 35.2 kDa, 30 kDa for BG37/TGR5. Other band(s): 28kDa non-specific in mouse.

Disclaimer

This product is for research use only and is not intended for therapeutic or diagnostic applications. Please contact a technical service representative for more information. All products of animal origin manufactured by Rockland Immunochemicals are derived from starting materials of North American origin. Collection was performed in United States Department of Agriculture (USDA) inspected facilities and all materials have been inspected and certified to be free of disease and suitable for exportation. All properties listed are typical characteristics and are not specifications. All suggestions and data are offered in good faith but without guarantee as conditions and methods of use of our products are beyond our control. All claims must be made within 30 days following the date of delivery. The prospective user must determine the suitability of our materials before adopting them on a commercial scale. Suggested uses of our products are not recommendations to use our products in violation of any patent or as a license under any patent of Rockland Immunochemicals, Inc. If you require a commercial license to use this material and do not have one, then return this material, unopened to: Rockland Inc., P.O. BOX 5199, Limerick, Pennsylvania, USA.