

Datasheet for 100-101-230

Maltose Phosphorylase Antibody

Overview

Description:	Anti-Maltose Phosphorylase (E. coli) (GOAT) Antibody - 100-101-230
Item No.:	100-101-230
Size:	2 mL
Applications:	WB
Reactivity:	Bacteria
Host Species:	Goat

Product Details

Background:	Maltose Phosphorylase catalyzes the phosphorolysis of maltose, leading to the formation of glucose and glucose 1-P.
Synonyms:	goat anti-Maltose Phosphorylase Antibody, mapA antibody, mpA antibody
Host Species:	Goat
Clonality:	Polyclonal
Format:	Antiserum

Target Details

Gene Name:	LAF
Reactivity:	Bacteria
Immunogen Type:	Native Protein
Immunogen:	Maltose Phosphorylase [E.coli]
Purity/Specificity:	This product was prepared from monospecific antiserum by a delipidation and defibrination. Assay by immunoelectrophoresis resulted in a single precipitin arc against anti-goat serum, purified and partially purified Maltose Phosphorylase [E.coli]. Cross reactivity against Maltose Phosphorylase from other sources is unknown.
Relevant Links:	<ul style="list-style-type: none">• UniProtKB - B2GEX2• NCBI - YP_001842841.1

- [GenID - 6233598](#)

Application Details

Tested Applications:	WB
Application Note:	Anti-Maltose Phosphorylase has been tested by western blot. A working dilution of 1:2,000 to 1:10,000 of the reconstitution concentration is suggested for this product.
Assay Dilutions:	All assays should be optimized by the user. Recommended dilutions (if any) may be listed below.
ELISA:	1:5,000 - 1:20,000
IP:	1:100
WB:	1:500 - 1:5,000

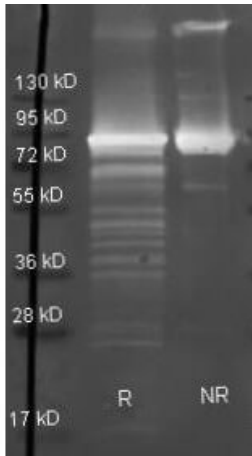
Formulation

Physical State:	Lyophilized
Concentration:	90 mg/mL by Refractometry
Buffer:	0.02 M Potassium Phosphate, 0.15 M Sodium Chloride, pH 7.2
Preservative:	0.01% (w/v) Sodium Azide
Stabilizer:	None
Reconstitution Volume:	2.0 mL
Reconstitution Buffer:	Restore with deionized water (or equivalent)

Shipping & Handling

Shipping Condition:	Ambient
Storage Condition:	Store vial at 4° C prior to restoration. For extended storage aliquot contents and freeze at -20° C or below. Avoid cycles of freezing and thawing. Centrifuge product if not completely clear after standing at room temperature. This product is stable for several weeks at 4° C as an undiluted liquid. Dilute only prior to immediate use.
Expiration:	Expiration date is one (1) year from date of receipt.

Images

**Western Blot**

Rockland Goat anti Maltose Phosphorylase antibody (200-101-230 lot 7850) was used to detect Maltose Phosphorylase under reducing (R) and non-reducing (NR) conditions. Reduced samples of purified target proteins contained 4% BME and were boiled for 5 minutes. Samples of ~1 μ g of protein per lane were run by SDS-PAGE. Protein was transferred to nitrocellulose and probed with 1:3000 dilution of primary antibody (ON 4 C in MB-070). Detection shown was using Dylight 488 conjugated Donkey anti goat (605-741-125 lot 21094 1:10K in TBS/MB-070 1 hr RT). Images were collected using the BioRad VersaDoc System

Disclaimer

This product is for research use only and is not intended for therapeutic or diagnostic applications. Please contact a technical service representative for more information. All products of animal origin manufactured by Rockland Immunochemicals are derived from starting materials of North American origin. Collection was performed in United States Department of Agriculture (USDA) inspected facilities and all materials have been inspected and certified to be free of disease and suitable for exportation. All properties listed are typical characteristics and are not specifications. All suggestions and data are offered in good faith but without guarantee as conditions and methods of use of our products are beyond our control. All claims must be made within 30 days following the date of delivery. The prospective user must determine the suitability of our materials before adopting them on a commercial scale. Suggested uses of our products are not recommendations to use our products in violation of any patent or as a license under any patent of Rockland Immunochemicals, Inc. If you require a commercial license to use this material and do not have one, then return this material, unopened to: Rockland Inc., P.O. BOX 5199, Limerick, Pennsylvania, USA.