

Datasheet for 100-101-150**Luciferase Antibody****Overview**

Description:	Anti-Luciferase (GOAT) Antibody - 100-101-150
Item No.:	100-101-150
Size:	2 mL
Applications:	WB
Reactivity:	Luciferase
Host Species:	Goat

Product Details

Background:	Anti luciferase Antibody recognizes luciferase that is commonly used in biological research as a reporter to assess the transcriptional activity in cells that are transfected with a genetic construct containing the luciferase gene under the control of a promoter of interest. Luciferase can also be used to detect the level of cellular ATP in cell viability assays or for kinase activity assays. Additionally proluminescent molecules that are converted to luciferin upon activity of a particular enzyme can be used to detect enzyme activity in coupled or two-step luciferase assays. Such substrates have been used to detect caspase activity and cytochrome P450 activity, among others.
Synonyms:	Goat Anti-Luciferase Antibody, Luciferase Firefly, Goat Anti Luciferase
Host Species:	Goat
Clonality:	Polyclonal
Format:	Antiserum

Target Details

Reactivity:	Luciferase
Immunogen Type:	Native Protein
Immunogen:	Luciferase [Firefly]

Purity/Specificity: This product was prepared from monospecific antiserum by a delipidation and defibrination. Assay by immunoelectrophoresis resulted in a single precipitin arc against anti-goat serum, purified and partially purified Luciferase [Firefly]. No reactivity is observed against Sea pansy (*Renilla reniformis*) luciferase.

Application Details

Tested Applications:	WB
Application Note:	Anti-Luciferase Antibody has been tested by western blot and is suitable in ELISA. This product can be assayed against 1.0 ug of Luciferase [Firefly] in a standard ELISA using Peroxidase conjugated Affinity Purified anti-Goat IgG [H&L] (Goat) code #611-1302 and (ABTS (2,2'-azino-bis-[3-ethylbenthiazoline-6-sulfonic acid]) code # ABTS-100 as a substrate for 30 minutes at room temperature. A working dilution of 1:20,000 to 1:100,000 of the reconstitution concentration is suggested for this product.
Assay Dilutions:	All assays should be optimized by the user. Recommended dilutions (if any) may be listed below.
ELISA:	1:20,000 - 1:100,000
WB:	1:2,000 - 1:10,000

Formulation

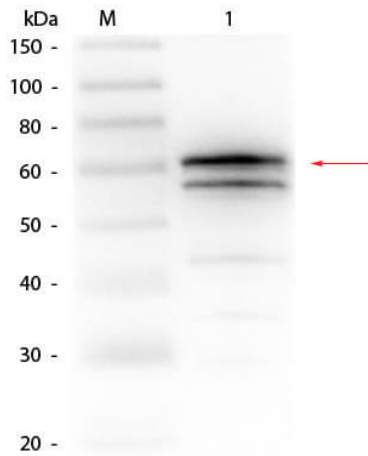
Physical State:	Lyophilized
Concentration:	82 mg/mL by Refractometry
Buffer:	0.02 M Potassium Phosphate, 0.15 M Sodium Chloride, pH 7.2
Preservative:	0.01% (w/v) Sodium Azide
Stabilizer:	None
Reconstitution Volume:	2.0 mL
Reconstitution Buffer:	Restore with deionized water (or equivalent)

Shipping & Handling

Shipping Condition:	Ambient
Storage Condition:	Store vial at 4° C prior to restoration. For extended storage aliquot contents and freeze at -20° C or below. Avoid cycles of freezing and thawing. Centrifuge product if not completely clear after standing at room temperature. This product is stable for several weeks at 4° C as an undiluted liquid. Dilute only prior to immediate use.

Expiration: Expiration date is one (1) year from date of receipt.

Images



Western Blot

Western Blot of Goat anti-Luciferase Antibody. Lane 1: Luciferase (Firefly). Load: 50 ng per lane. Primary antibody: Goat anti-Luciferase Antibody at 1:1,000 overnight at 4°C. Secondary antibody: HRP goat secondary antibody at 1:40,000 for 30 min at RT. Block: MB-070 for 30 min at RT. Predicted/Observed size: 60 kDa, 60 kDa for Luciferase.

Disclaimer

This product is for research use only and is not intended for therapeutic or diagnostic applications. Please contact a technical service representative for more information. All products of animal origin manufactured by Rockland Immunochemicals are derived from starting materials of North American origin. Collection was performed in United States Department of Agriculture (USDA) inspected facilities and all materials have been inspected and certified to be free of disease and suitable for exportation. All properties listed are typical characteristics and are not specifications. All suggestions and data are offered in good faith but without guarantee as conditions and methods of use of our products are beyond our control. All claims must be made within 30 days following the date of delivery. The prospective user must determine the suitability of our materials before adopting them on a commercial scale. Suggested uses of our products are not recommendations to use our products in violation of any patent or as a license under any patent of Rockland Immunochemicals, Inc. If you require a commercial license to use this material and do not have one, then return this material, unopened to: Rockland Inc., P.O. BOX 5199, Limerick, Pennsylvania, USA.