

Datasheet for 011-0303

Rabbit IgG Fc Peroxidase

Overview

Description:	Rabbit IgG Fc Fragment Peroxidase Conjugated - 011-0303
Item No.:	011-0303
Size:	1 mg
Origin:	Rabbit

Product Details

Background:	Secreted as part of the adaptive immune response by plasma B cells, immunoglobulin G constitutes 75% of serum immunoglobulins. Immunoglobulin G binds to viruses, bacteria, as well as fungi and facilitates their destruction or neutralization via agglutination (and thereby immobilizing them), activation of the compliment cascade, and opsonization for phagocytosis. This product possesses the F(c) region, recognized by high-affinity Fc receptor proteins.
Synonyms:	Rabbit IgG F(c) fragment peroxidase conjugation, HRP conjugated Rabbit IgG F(c) fragment
Species of Origin:	Rabbit
Conjugate:	Peroxidase (HRP)
Format:	IgG Fc
Type:	Native Protein

Target Details

Purity/Specificity:	This product was prepared from normal serum by delipidation, salt fractionation, ion exchange chromatography followed by papain digestion and extensive dialysis against the buffer stated above. Assay by immunoelectrophoresis resulted in a single precipitin arc against anti-Peroxidase, anti- Rabbit IgG, anti-Rabbit IgG F(c) and anti-Rabbit Serum. No reaction was observed against anti-Rabbit IgG F(ab') ₂ or anti-Papain.
----------------------------	--

Application Details

Application Note:	BOVINE IgG F(c) fragment peroxidase conjugated can be used as a control for ELISA and western blotting.
--------------------------	---

Assay Dilutions: All assays should be optimized by the user. Recommended dilutions (if any) may be listed below.

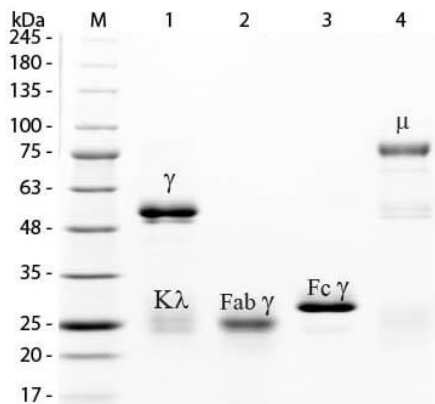
Formulation

Physical State:	Lyophilized
Concentration:	1.0 mg/mL by UV absorbance at 280 nm
Buffer:	0.02 M Potassium Phosphate, 0.15 M Sodium Chloride, pH 7.2
Preservative:	0.01% (w/v) Gentamicin Sulfate. Do NOT add Sodium Azide!
Stabilizer:	10 mg/mL Bovine Serum Albumin (BSA) - Immunoglobulin and Protease free
Reconstitution Volume:	1.0 mL
Reconstitution Buffer:	Restore with deionized water (or equivalent)

Shipping & Handling

Shipping Condition:	Ambient
Storage Condition:	Store vial at 4° C prior to restoration. For extended storage aliquot contents and freeze at -20° C or below. Avoid cycles of freezing and thawing. Centrifuge product if not completely clear after standing at room temperature. This product is stable for several weeks at 4° C as an undiluted liquid. Dilute only prior to immediate use.
Expiration:	Expiration date is one (1) year from date of receipt.

Images



SDS-PAGE

SDS-PAGE of Rabbit IgG Whole Molecule Rhodamine Conjugated (p/n 011-0002). Lane M: 3 μ L Opal Prestained Marker (p/n MB-210-0500). Lane 1: Reduced Rabbit IgG Whole Molecule Rhodamine Conjugated (p/n 011-0002). Lane 2: Reduced Rabbit IgG F(ab) Fragment (p/n 011-0105). Lane 3: Reduced Rabbit IgG F(c) Fragment (p/n 011-0103). Lane 4: Reduced Rabbit IgM Whole Molecule (p/n 011-0107). Load: 1 μ g for F(ab) and F(c); 1.2 μ g for IgG and IgM. Predicted/Observed size: IgG at 50 and 25 kDa; F(c) at 25 kDa; F(ab) at 25 kDa; IgM at 70 and 23 kDa. Observed F(c) Fragment migrates slightly higher.

Disclaimer

This product is for research use only and is not intended for therapeutic or diagnostic applications. Please contact a technical service representative for more information. All products of animal origin manufactured by Rockland Immunochemicals are derived from starting materials of North American origin. Collection was performed in United States Department of Agriculture (USDA) inspected facilities and all materials have been inspected and certified to be free of disease and suitable for exportation. All properties listed are typical characteristics and are not specifications. All suggestions and data are offered in good faith but without guarantee as conditions and methods of use of our products are beyond our control. All claims must be made within 30 days following the date of delivery. The prospective user must determine the suitability of our materials before adopting them on a commercial scale. Suggested uses of our products are not recommendations to use our products in violation of any patent or as a license under any patent of Rockland Immunochemicals, Inc. If you require a commercial license to use this material and do not have one, then return this material, unopened to: Rockland Inc., P.O. BOX 5199, Limerick, Pennsylvania, USA.