

**Datasheet for 010-0102****Mouse IgG****Overview**

|                      |  |
|----------------------|--|
| <b>Description:</b>  | Mouse IgG Whole Molecule (BULK ORDER) - 010-0102 |
| <b>Item No.:</b>     | 010-0102   |
| <b>Size:</b>         | 25 mg  |
| <b>Applications:</b> | SDS-PAGE, ELISA, FC, IF, Multiplex, Other, WB    |
| <b>Origin:</b>       | Mouse  |

**Product Details**

|                           |  |
|---------------------------|--|
| <b>Background:</b>        | Mouse IgG purified protein (Immunoglobulin G) are antibody molecules. Mouse IgG is composed of four peptide chains — two heavy chains and two light chains. Mouse IgG has two antigen binding sites. Other Immunoglobulins may be described in terms of polymers with the IgG structure considered the monomer. Mouse IgG typically constitutes 75% of serum immunoglobulins. Mouse IgG molecules are synthesized and secreted by plasma B cells. Ideal as a negative control for Flow Cytometry, Western blotting, immunoprecipitation and immunohistochemistry applications. |
| <b>Synonyms:</b>          | Immunoglobulin G from Mouse, IgG from Mouse, purified polyclonal IgG antibody  |
| <b>Species of Origin:</b> | Mouse  |
| <b>Format:</b>            | IgG  |
| <b>Type:</b>              | Native Protein   |

**Target Details**

|                            |  |
|----------------------------|--|
| <b>Purity/Specificity:</b> | Mouse IgG was prepared from normal mouse serum by a multi-step process which includes delipidation, salt fractionation and ion exchange chromatography followed by extensive dialysis against the buffer stated above. Assay by immunoelectrophoresis resulted in a single precipitin arc against anti-Mouse IgG and anti-Mouse Serum. |
| <b>Relevant Links:</b>     | <ul style="list-style-type: none"><li><a href="#">010-0102 SDS</a></li></ul>   |

**Application Details**

|                                |  |
|--------------------------------|--|
| <b>Tested Applications:</b>    | SDS-PAGE   |
| <b>Suggested Applications:</b> | ELISA, FC, IF, Multiplex, Other, WB (Based on references)  |
| <b>Application Note:</b>       | Mouse IgG whole molecule has been tested in SDS-Page and can be utilized as a control or standard reagent in SDS, Western Blotting, and ELISA experiments. |
| <b>Assay Dilutions:</b>        | All assays should be optimized by the user. Recommended dilutions (if any) may be listed below.  |
| <b>ELISA:</b>                  | User Optimized   |
| <b>FC:</b>                     | User Optimized   |
| <b>IHC:</b>                    | User Optimized   |
| <b>IP:</b>                     | User Optimized   |
| <b>WB:</b>                     | User Optimized   |

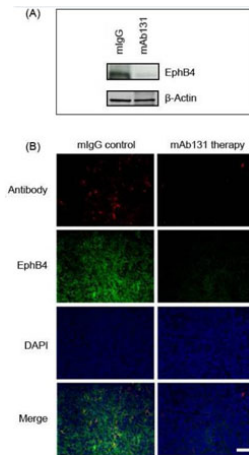
## Formulation

|                               |  |
|-------------------------------|--|
| <b>Physical State:</b>        | Lyophilized  |
| <b>Concentration:</b>         | 10.0 mg/mL by UV absorbance at 280 nm                      |
| <b>Buffer:</b>                | 0.02 M Potassium Phosphate, 0.15 M Sodium Chloride, pH 7.2 |
| <b>Preservative:</b>          | 0.01% (w/v) Sodium Azide                                   |
| <b>Stabilizer:</b>            | None   |
| <b>Reconstitution Volume:</b> | 2.5 mL   |
| <b>Reconstitution Buffer:</b> | Restore with deionized water (or equivalent)               |

## Shipping & Handling

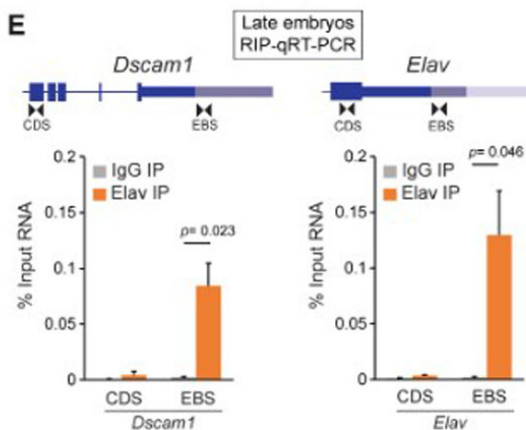
|                            |   |
|----------------------------|---|
| <b>Shipping Condition:</b> | Ambient   |
| <b>Storage Condition:</b>  | Store purified Mouse IgG at 4° C prior to restoration. For extended storage aliquot contents and freeze at -20° C or below. Avoid cycles of freezing and thawing. Centrifuge product if not completely clear after standing at room temperature. This product is stable for several weeks at 4° C as an undiluted liquid. Dilute only prior to immediate use. |
| <b>Expiration:</b>         | Expiration date is one (1) year from date of receipt.   |

## Images



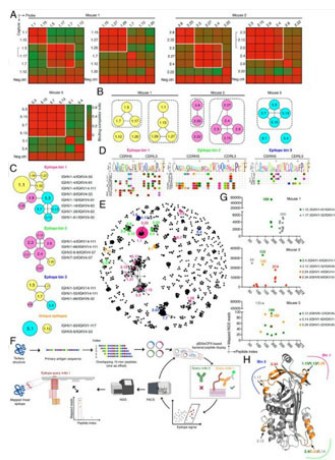
### Immunofluorescence Microscopy

(A) Western blot analysis of EphB4 level in HT29 tumor tissues after mAb131 or mIgG (control) treatment. (B) Antibody and EphB4 co-staining on tumor sections of mAb131 or mIgG (control)-treated HT29 tumor-bearing mice 48 h p.i. of hAb47-Cy5.5. Scale bar, 20 μm. Mouse IgG (mIgG) (p/n 010-0102). Figure 6. PMID: 23211050.



### Figure

Elav Regulates Dscam1 Long 3' UTR Biogenesis. (E) RIP-qRT-PCR experiments demonstrate binding of Elav downstream of the Dscam1 proximal polyA site (left), and as a positive control, binding of Elav downstream of the Elav proximal polyA site (right). RIP was performed using rat and mouse anti-Elav antibodies from 12–16 h embryos. Primers were designed to detect a region in the CDS or a region immediately downstream of the proximal polyA site (EBS). Error bars represent SEM of four separate immunoprecipitation reactions on independently prepared nuclei. n = 4. p value reflects two-tailed paired Student's t test. Samples were incubated with a mixture of 1 μg rat and 1 μg mouse anti-Elav antibodies or a mixture of 1 μg rat and 1 μg mouse IgG (p/n 012-0102 and p/n 010-0102). Fig 1. PMID: 31242415.



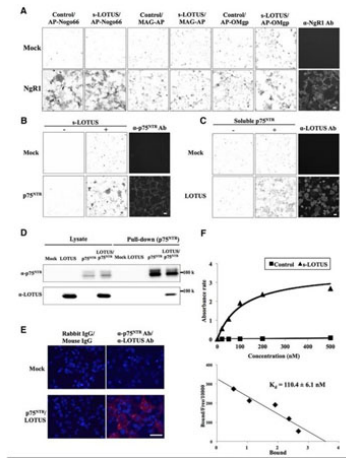
### ELISA

Epitope-targeting space of top expanded clones. Epitope binning following a classical sandwich protocol: loading of capture antibody, quenching of biosensors in polyclonal mouse IgG (p/n 010-0102), loading of capture antibody, loading of OVA, loading of probe antibody.

(A) Heatmaps show competitive antigen binding based on BLI assays for highly expanded antibody clones in each mouse. Antibodies indicated on the left were captured and probe antibodies on top were used to determine cross-competition for epitope access. Red indicates no binding of the probe antibody as a consequence of epitope blocking by the capture antibody, whereas green denotes binding of the competitor antibody. Groups of antibodies that target the same epitope (epitope bins) are highlighted in white

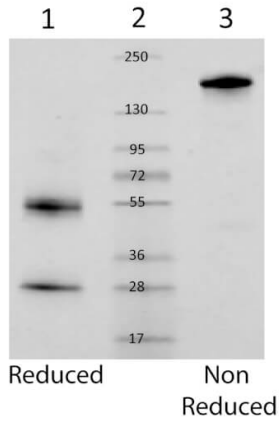
squares. Brackets indicate clonal variants that share the same VH/VL germline V-genes which differed only in CDRH3/CDRL3 aa sequence. An anti-RSVF capture antibody, which does not bind the antigen was used as negative control for all experiments. Clone ID according to SI Appendix, Table S1. (B) Epitope bins with associated clones as determined in (A). Nodes are connected based on observed direct cross-competition. (C) Epitope bins as defined by the cross-competition of clones from different mice. Representative V-gene combinations are shown on the right. Nodes are connected based on direct cross-competition and sizes indicate clone size (number of cells per clone). Colors represent mouse ID as shown in (B). Results are reflective of SI Appendix, Fig. S19. (D) CDRH3/CDRL3 sequence alignment of bin-specific clones. Sequence logo is shown on top and aa residues are highlighted if they are in disagreement with the consensus sequence. (E) Mapping of epitope space as determined in (C) on a sequence similarity network of all IgG clones across all mice (SI Appendix, Fig. S12). Edges represent clones with similar CDR3 sequences based on first calculating separate distance matrices for CDRH3 and CDRL3 amino acid sequences. Following the summation of these two matrices, edges were drawn between those clones separated by <4 aa mutations. Node color according to bin color in (C). Size of clones is reflected by node size. Only those nodes with at least one edge are plotted for visualization purposes. Clone 1.20 is not shown since it was not connected. (F) Linear epitope-mapping workflow using bacterial peptide display. (G) Epitope mapping results of select clones from MS-1, MS-2, and MS-5. For visualization purposes, only data points with >700 mapped reads are shown for MS-1 and MS-2 and clone 5.14 of MS-5; for clones 5.12 and 5.29, only data points with >18 mapped reads are shown. Shared data point between 5.12 and 5.29 is indicated with a circle. Corresponding V-gene combinations are indicated. (H) Mapping of epitope bins from (C) on to the OVA crystal structure using antibody epitope information obtained in (G) (PDB: 1OVA). Epitope binning following a classical sandwich protocol: loading of capture antibody, quenching of biosensors in polyclonal mouse IgG (p/n 010-0102), loading of capture antibody, loading of OVA, loading of probe antibody.

Fig 4. PMID: 35486691.

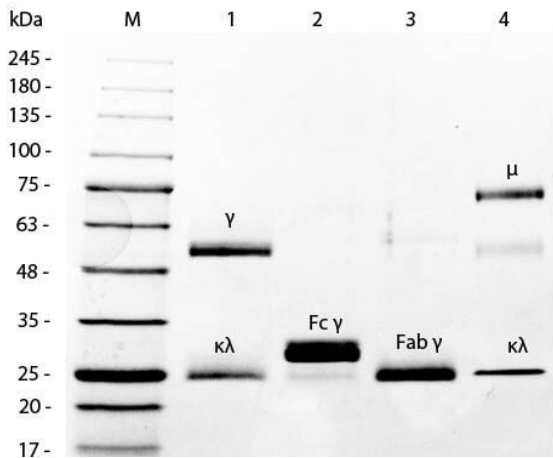


## ELISA

LOTUS binds to p75NTR. A, Binding assay in NgR1-overexpressing Cos-7 cells sequentially treated with s-LOTUS and MAIs. After SBP-Fc-LOTUS (0.1–1  $\mu$ m) or SBP-Fc (control) was applied to NgR1-overexpressing Cos-7 cells and followed by 6His-AP-tagged MAIs (6His-AP-Nogo66, 3 nm; MAG-AP-6His, 20 nm; 6His-AP-OMgp, 50 nm), each MAI was detected with AP substrate. Scale bar, 100  $\mu$ m. B, Binding assay in p75NTR-overexpressing Cos-7 cells treated with s-LOTUS. SBP-Fc-LOTUS or its vehicle was applied and detected by immunostaining with an anti-SBP-tag antibody. Scale bar, 100  $\mu$ m. C, Binding assay in LOTUS-overexpressing Cos-7 cells treated with soluble p75NTR. p75NTR-Fc-SBP or its vehicle was applied and detected in the same way as in B. Scale bar, 100  $\mu$ m. D, Pull-down assay in p75NTR and LOTUS co-overexpressing Cos-7 cells. GST-p75NTR and SBP-FLAG-LOTUS were co-expressed and the cell lysate was incubated with glutathione Sepharose beads. SBP-FLAG-LOTUS and GST-p75NTR were detected by Western blotting using an anti-SBP-tag antibody and an anti-GST antibody, respectively. E, Representative images of PLA signals (red) after treatment with primary antibodies before fixation in Cos-7 cells overexpressing both GST-p75 and SBP-FLAG-LOTUS. Red signals represent the close colocalization and interaction between LOTUS and p75NTR on the cell membrane surface. Cells were costained with DAPI (blue). Scale bar, 50  $\mu$ m. F, Binding affinity of LOTUS for p75NTR examined by ELISA using SBP-Fc-p75NTR and LOTUS-Fc-6His or Fc-6His (control). Scatchard plot shows  $K_d = 110.4 \pm 6.1$  nm. The data were obtained from four independent experiments. Control Mouse IgG (p/n 010-0102). Fig 1. PMID: 29440387.


**SDS-PAGE**

SDS-Page of Mouse IgG whole molecule. Lane 1: Mouse IgG reduced. Lane 2: Molecular Weight Marker. Lane 3: Mouse IgG non-reduced. Load: 1 µg per lane. Predicted/Observed size (non-reduced): 160 kDa, 160 kDa. Predicted/Observed size (reduced): 55 and 28 kDa, 55 and 28 kDa.


**SDS-PAGE**

SDS-PAGE of Mouse IgG Whole Molecule Rhodamine Conjugated (p/n 010-0002). MW: 5 µL Opal Prestained Marker (p/n MB-210-0500). Lane 1: Reduced Mouse IgG Whole Molecule Rhodamine Conjugated (p/n 010-0002). Lane 2: Reduced Mouse F(c) Fragment (p/n 010-0103). Lane 3: Reduced Mouse F(ab) Fragment (p/n 010-0105). Lane 4: Mouse IgM Kappa Myeloma Protein (p/n 010-001-033). Load: 1 µg per lane. Predicted/Observed size: IgG at 50 and 25 kDa; F(c) at 25 kDa; F(ab) at 25 kDa; IgM K at 70 and 23 kDa. Observed F(c) Fragment migrates slightly higher.

**References**

- Wedegaertner H et al. Divergent regulation of  $\alpha$ -arrestin ARRDC3 function by ubiquitination. *Mol Biol Cell*. (2023)
- Neumeier, D et al. Phenotypic determinism and stochasticity in antibody repertoires of clonally expanded plasma cells. *Proceedings of the National Academy of Sciences of the United States of America* (2022)
- Neumeier D et al. Phenotypic determinism and stochasticity in antibody repertoires of clonally expanded plasma cells. *bioRxiv Preprint* (2021)
- Mason BM et al. Optimization of therapeutic antibodies by predicting antigen specificity from antibody sequence via deep learning. *Nat Biomed Eng*. (2021)
- Virtakoivu R et al. Systemic Blockade of Clever-1 Elicits Lymphocyte Activation Alongside Checkpoint Molecule Downregulation in Patients with Solid Tumors: Results from a Phase I/II Clinical Trial. *Clin Cancer Res*. (2021)
- Arakaki AKS et al.  $\alpha$ -arrestin ARRDC3 tumor suppressor function is linked to GPCR-induced TAZ activation and breast cancer metastasis. *J Cell Sci*. (2021)
- Fair-Makela R et al. Robo4 contributes to the turnover of Peyer's patch B cells. *Mucosal Immunol*. (2020)
- Matsumura T et al. Sequential Sensing by TLR2 and Mincle Directs Immature Myeloid Cells to Protect against Invasive Group A Streptococcal Infection in Mice. *Cell Rep* (2019)
- Zhang Z et al. Elav-mediated exon skipping and alternative polyadenylation of the Dscam1 gene are required for axon outgrowth. *Cell Rep* (2019)
- Kawakami Y et al. The soluble form of LOTUS inhibits Nogo receptor-mediated signaling by interfering with the interaction between Nogo receptor type 1 and p75 neurotrophin receptor. *J Neurosci*. (2018)
- Kruse N et al. A First Tetraplex Assay for the Simultaneous Quantification of Total  $\alpha$ -Synuclein, Tau,  $\beta$ -Amyloid42 and DJ-1 in Human Cerebrospinal Fluid. *PLoS One* (2016)
- Bronietzki M et al. Study of phagolysosome biogenesis in live macrophages. *J Vis Exp*. (2014)
- Li, D et al. Targeting the EphB4 receptor for cancer diagnosis and therapy monitoring. *Molecular Pharmaceutics* (2013)
- Penaranda, C et al. Anti-CD3 therapy promotes tolerance by selectively depleting pathogenic cells while preserving regulatory T cells. *Journal of Immunology (Baltimore, Md. : 1950)* (2011)
- Ono K et al. Caenorhabditis elegans kettin, a large immunoglobulin-like repeat protein, binds to filamentous actin and provides mechanical stability to the contractile apparatuses in body wall muscle. *Mol Biol Cell*. (2006)

## Disclaimer

This product is for research use only and is not intended for therapeutic or diagnostic applications. Please contact a technical service representative for more information. All products of animal origin manufactured by Rockland Immunochemicals are derived from starting materials of North American origin. Collection was performed in United States Department of Agriculture (USDA) inspected facilities and all materials have been inspected and certified to be free of disease and suitable for exportation. All properties listed are typical characteristics and are not specifications. All suggestions and data are offered in good faith but without guarantee as conditions and methods of use of our products are beyond our control. All claims must be made within 30 days following the date of delivery. The prospective user must determine the suitability of our materials before adopting them on a commercial scale. Suggested uses of our products are not recommendations to use our products in violation of any patent or as a license under any patent of Rockland Immunochemicals, Inc. If you require a commercial license to use this material and do not have one, then return this material, unopened to: Rockland Inc., P.O. BOX 5199, Limerick, Pennsylvania, USA.