

Datasheet for 010-001-V51-0100
rMouse IL-12 Protein**Overview**

Description:	Mouse Interleukin-12 Recombinant Protein - 010-001-V51-0100
Item No.:	010-001-V51-0100
Size:	100 µg
Applications:	SDS-PAGE, Cellular Assay
Origin:	Mouse
Expressed in:	E. coli

Product Details

Background:	Interleukin-12 (IL-12) is an important mediator of cellular-immunity produced by dendritic cells, macrophages and B cells when stimulated with antigen. IL-12 is involved in differentiating precursor helper T cells to Th1 and/or Th2 subtypes and promotes the production of IFN gamma and TNF alpha. Mouse IL-12 is active on human and mouse cells. Recombinant mouse IL-12 is a glycosylated, disulfide-linked heterodimer. It is containing one p35 su
Synonyms:	NKSF, CLMF
Species of Origin:	Mouse
Expressed in:	E. coli
Type:	Recombinant Protein
Low Endotoxin:	Yes

Target Details

Gene Name:	Il12a/Il12b
Purity/Specificity:	Interleukin-12 purity was determined to be greater than 95% as determined by reducing and non-reducing SDS-pAGE.
Relevant Links:	<ul style="list-style-type: none">• UniProtKB - P43432

Application Details

Tested Applications:	SDS-PAGE
Suggested Applications:	Cellular Assay (Based on references)
Application Note:	Interleukin-12 Recombinant Protein has been tested by SDS-PAGE and biological activity and is suitable as a control for polyclonal or monoclonal anti-Interleukin-12 in immunological assays. Lyophilized in 10 mM sodium phosphate, 50 mM sodium chloride, pH 7.5.
Assay Dilutions:	All assays should be optimized by the user. Recommended dilutions (if any) may be listed below.
Other:	Endotoxin Level: Measured by kinetic LAL analysis and is typically ≤ 1 EU/ μ g protein. Biologic Activity: The activity is determined by the induced expression of CD25 on CD8+ mouse T cells and is typically detectable starting at 0.1 ng/mL.

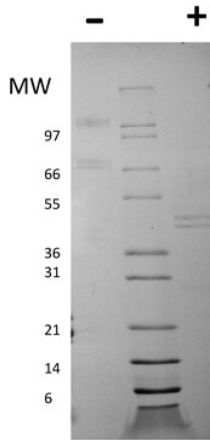
Formulation

Physical State:	Lyophilized
Buffer:	See application note.
Preservative:	None
Stabilizer:	None
Reconstitution Volume:	100 μ L
Reconstitution Buffer:	Restore with deionized water (or equivalent)

Shipping & Handling

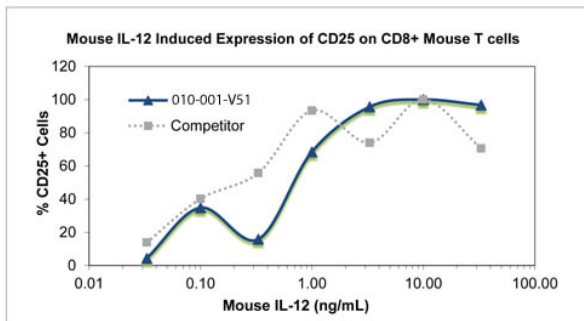
Shipping Condition:	Ambient
Storage Condition:	Store vial at 4° C prior to restoration. Dilute only prior to immediate use. Maintain sterility. This product DOES NOT contain preservative. DO NOT VORTEX. We recommend adding a carrier protein such as HSA or BSA to 0.1% (i.e. 1.0 mg/mL). For best results aliquot contents and freeze at -20° C or colder. Avoid cycles of freezing and thawing. Centrifuge vial before each opening to dislodge contents from the cap and to clarify if contents are not clear after standing at room temperature.
Expiration:	Expiration date is six (6) months from date of receipt.

Images



SDS-PAGE

SDS-PAGE of Mouse Interleukin-12 Recombinant Protein. Lane 1: 1 μ g Mouse IL-12 in non-reducing conditions (-). Lane 2: Molecular weight marker. Lane 3: 1 μ g Mouse IL-12 in reducing conditions (+). Mouse IL-12 is a heterodimer comprised of one 40 kDa subunit and one 35 kDa subunit. The total predicted MW is 70 kDa.



SDS-PAGE

Bioactivity of Mouse Interleukin-12 Recombinant Protein. Serial dilutions of Mouse IL-12 (starting at 33 ng/mL) were added to mouse splenic T cells. After 72 hours, cells were stained to analyze surface CD8 and CD25. The linear portion of the curve was used to calculate the ED50. The ED50 of Mouse IL-12 is between 1-1.8 ng/mL. This value is comparable to the typically expected to be less than 2 ng/mL.

Disclaimer

This product is for research use only and is not intended for therapeutic or diagnostic applications. Please contact a technical service representative for more information. All products of animal origin manufactured by Rockland Immunochemicals are derived from starting materials of North American origin. Collection was performed in United States Department of Agriculture (USDA) inspected facilities and all materials have been inspected and certified to be free of disease and suitable for exportation. All properties listed are typical characteristics and are not specifications. All suggestions and data are offered in good faith but without guarantee as conditions and methods of use of our products are beyond our control. All claims must be made within 30 days following the date of delivery. The prospective user must determine the suitability of our materials before adopting them on a commercial scale. Suggested uses of our products are not recommendations to use our products in violation of any patent or as a license under any patent of Rockland Immunochemicals, Inc. If you require a commercial license to use this material and do not have one, then return this material, unopened to: Rockland Inc., P.O. BOX 5199, Limerick, Pennsylvania, USA.