

**Datasheet for 009-F01-W12-0010****rHuman PDGF-BB Protein****Overview**

<b>Description:</b>	Human Platelet Derived Growth Factor-BB Recombinant Protein (Animal Free) - 009-F01-W12-0010
<b>Item No.:</b>	009-F01-W12-0010
<b>Size:</b>	10 µg
<b>Applications:</b>	SDS-PAGE, Cellular Assay
<b>Origin:</b>	Human
<b>Expressed in:</b>	E. coli

**Product Details**

<b>Background:</b>	Platelet-Derived Growth Factor (PDGF) is a mitogenic peptide growth hormone carried in the alpha-granules of platelets and is released when platelets adhere to traumatized tissues. Connective tissue cells near the traumatized region respond by initiating the process of replication. The synthesis of PDGF can be induced by IL-1, IL-6, TNF- $\alpha$ , TGF- $\beta$ and EGF. Recombinant human PDGF-BB is a non-glycosylated, disulfide-linked homodimer, containing two 109 amino acid chains, with a total molecular weight of 24.3 kDa.
<b>Synonyms:</b>	PDGF-2, Platelet-derived growth factor B chain, Platelet-derived growth factor beta polypeptide, Proto-oncogene c-Sis
<b>Species of Origin:</b>	Human
<b>Expressed in:</b>	E. coli
<b>Type:</b>	Recombinant Protein
<b>Low Endotoxin:</b>	Yes

**Target Details**

<b>Gene Name:</b>	PDGFB
<b>Purity/Specificity:</b>	Platelet-Derived Growth Factor is produced with no animal-derived raw products, animal free equipment and animal free protocols. Purity was determined to be greater than 95% as determined by analysis by UV-Spectroscopy at 280nm and by reducing and non-reducing SDS-PAGE.

**Relevant Links:**

- [UniProtKB - P01127](#)

## Application Details

<b>Tested Applications:</b>	SDS-PAGE
<b>Suggested Applications:</b>	Cellular Assay (Based on references)
<b>Application Note:</b>	Platelet Derived Growth Factor-BB Recombinant Protein has been tested by biological activity and is suitable as a control for polyclonal or monoclonal anti-Platelet Derived Growth Factor-BB in immunological assays.
<b>Assay Dilutions:</b>	All assays should be optimized by the user. Recommended dilutions (if any) may be listed below.
<b>Other:</b>	Endotoxin Level: Measured by kinetic LAL analysis and is typically $\leq 1$ EU/ $\mu$ g protein. Biologic Activity: The activity is determined by the dose-dependent proliferation of 3T3 indicator cells and is typically 1-3 ng/mL.

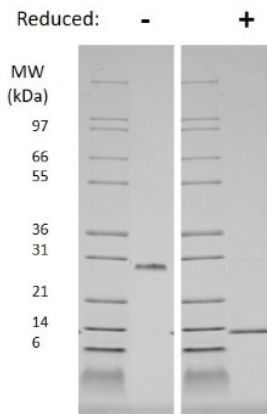
## Formulation

<b>Physical State:</b>	Lyophilized
<b>Concentration:</b>	0.1mg/ml
<b>Buffer:</b>	0.01 M Sodium Phosphate, pH 7.5
<b>Preservative:</b>	None
<b>Stabilizer:</b>	None
<b>Reconstitution Volume:</b>	10 $\mu$ l (10-100 $\mu$ l)
<b>Reconstitution Buffer:</b>	Restore with deionized water (or equivalent)

## Shipping & Handling

<b>Shipping Condition:</b>	Ambient
<b>Storage Condition:</b>	Store vial at -20° C prior to restoration. Dilute only prior to immediate use. Maintain sterility. This product DOES NOT contain preservative. DO NOT VORTEX. We recommend adding a carrier protein such as HSA or BSA to 0.1% (i.e. 1.0 mg/mL). For best results aliquot contents and freeze at -20° C or colder. Avoid cycles of freezing and thawing. Centrifuge vial before each opening to dislodge contents from the cap and to clarify if contents are not clear after standing at room temperature.
<b>Expiration:</b>	Expiration date is six (6) months from date of receipt.

## Images



### SDS-PAGE

SDS-PAGE Results of Human Platelet Derived Growth Factor BB.

Lane 1: Molecular weight.

Lane 2: 1 $\mu$ g human PDGF-BB non-reduced.

Lane 3: Molecular weight.

Lane 4: 1 $\mu$ g human PDGF-BB reduced.

4-20% Tris-Glycine gel, Coomassie Blue stained.

Expect: disulfide linked homodimer 24.9kDa; each monomer is 12.4kDa.

## Disclaimer

This product is for research use only and is not intended for therapeutic or diagnostic applications. Please contact a technical service representative for more information. All products of animal origin manufactured by Rockland Immunochemicals are derived from starting materials of North American origin. Collection was performed in United States Department of Agriculture (USDA) inspected facilities and all materials have been inspected and certified to be free of disease and suitable for exportation. All properties listed are typical characteristics and are not specifications. All suggestions and data are offered in good faith but without guarantee as conditions and methods of use of our products are beyond our control. All claims must be made within 30 days following the date of delivery. The prospective user must determine the suitability of our materials before adopting them on a commercial scale. Suggested uses of our products are not recommendations to use our products in violation of any patent or as a license under any patent of Rockland Immunochemicals, Inc. If you require a commercial license to use this material and do not have one, then return this material, unopened to: Rockland Inc., P.O. BOX 5199, Limerick, Pennsylvania, USA.