

Datasheet for 009-001-V09-0020

rHuman GDF-15 (D variant) Protein

Overview

Description:	Human Growth and Differentiation Factor-15 (D variant) Recombinant Protein - 009-001-V09-0020
Item No.:	009-001-V09-0020
Size:	20 µg
Applications:	SDS-PAGE
Origin:	Human
Expressed in:	E. coli

Product Details

Background:	Growth and Differentiation Factor 15 (GDF-15) is a TGFβ family member, made by the placenta and heart tissues, that has a role in regulating inflammatory and apoptotic pathways. GDF-15 has become an emerging marker of early heart disease and has the potential as being used as a molecule for screening patients for early heart failure. Recombinant human GDF-15 D is a non-glycosylated, disulfide linked homodimer, containing two identical 113 amino acid chains, with a total molecular weight of 24.5 kDa. There is a His to an Asp substitution at position 7.
Synonyms:	Macrophage inhibitory cytokine 1 (MIC-1), NSAID-activated gene 1 protein (NAG-1), NSAID-regulated gene 1 protein (NRG-1), Placental TGFβ, Placental bone morphogenetic protein, Prostate differentiation factor
Species of Origin:	Human
Expressed in:	E. coli
Type:	Recombinant Protein
Low Endotoxin:	Yes

Target Details

Gene Name:	GDF15
Purity/Specificity:	Growth and Differentiation Factor-15 (D variant) purity was determined to be greater than 95% as determined by analysis by HPLC, UV-Spectroscopy at 280nm and by reducing and non-reducing SDS-pAGE.

Relevant Links:

- [UniProtKB - Q99988](#)

Application Details

Tested Applications:	SDS-PAGE
Application Note:	Growth and Differentiation Factor-15 Recombinant Protein has been tested by SDS-PAGE and is suitable as a control for polyclonal or monoclonal anti-Growth and Differentiation Factor-15 in immunological assays.
Assay Dilutions:	All assays should be optimized by the user. Recommended dilutions (if any) may be listed below.
Other:	Endotoxin Level: Measured by kinetic LAL analysis and is typically ≤ 1 EU/ μ g protein. Biologic Activity: The activity is determined by the inhibition of DU-145 cells and is typically 1-2 μ g/mL.

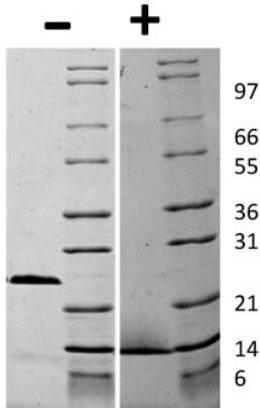
Formulation

Physical State:	Lyophilized
Concentration:	0.1 mg/mL by UV absorbance at 280 nm
Buffer:	0.1% Trifluoroacetic acid
Preservative:	None
Stabilizer:	None
Reconstitution Volume:	20 μ l (20-200 μ l)
Reconstitution Buffer:	Restore with deionized water (or equivalent)

Shipping & Handling

Shipping Condition:	Ambient
Storage Condition:	Store vial at 4° C prior to restoration. Dilute only prior to immediate use. Maintain sterility. This product DOES NOT contain preservative. DO NOT VORTEX. We recommend adding a carrier protein such as HSA or BSA to 0.1% (i.e. 1.0 mg/mL). For best results aliquot contents and freeze at -20° C or colder. Avoid cycles of freezing and thawing. Centrifuge vial before each opening to dislodge contents from the cap and to clarify if contents are not clear after standing at room temperature.
Expiration:	Expiration date is six (6) months from date of receipt.

Images



SDS-PAGE

SDS-PAGE of Human Growth and Differentiation Factor-15 (D variant) Recombinant Protein. Lane 1: 1 µg Human GDF-15 D Variant in non-reducing conditions (-). Lane 2: Molecular weight marker. Lane 3: 1 µg Human GDF-15 D Variant in reducing conditions (+). Lane 4: Molecular weight marker. Human GDF-15 D Variant is predicted to be a homodimer with a predicted MW of 24.5 kDa.

Disclaimer

This product is for research use only and is not intended for therapeutic or diagnostic applications. Please contact a technical service representative for more information. All products of animal origin manufactured by Rockland Immunochemicals are derived from starting materials of North American origin. Collection was performed in United States Department of Agriculture (USDA) inspected facilities and all materials have been inspected and certified to be free of disease and suitable for exportation. All properties listed are typical characteristics and are not specifications. All suggestions and data are offered in good faith but without guarantee as conditions and methods of use of our products are beyond our control. All claims must be made within 30 days following the date of delivery. The prospective user must determine the suitability of our materials before adopting them on a commercial scale. Suggested uses of our products are not recommendations to use our products in violation of any patent or as a license under any patent of Rockland Immunochemicals, Inc. If you require a commercial license to use this material and do not have one, then return this material, unopened to: Rockland Inc., P.O. BOX 5199, Limerick, Pennsylvania, USA.