

Datasheet for 008-0103

Horse IgG Fc fragment

Overview

Description:	Horse IgG Fc Fragment - 008-0103
Item No.:	008-0103
Size:	1 mg
Applications:	SDS-PAGE, IHC
Origin:	Horse

Product Details

Background:	Secreted as part of the adaptive immune response by plasma B cells, immunoglobulin G constitutes 75% of serum immunoglobulins. Immunoglobulin G binds to viruses, bacteria, as well as fungi and facilitates their destruction or neutralization via agglutination (and thereby immobilizing them), activation of the compliment cascade, and opsonization for phagocytosis. This product possesses the F(c) region, recognized by high-affinity Fc receptor proteins.
Synonyms:	Horse immunoglobulin G F(c), IgG F(c), Horse Fc Fragment
Species of Origin:	Horse
Format:	IgG Fc
Type:	Native Protein

Target Details

Purity/Specificity:	Horse IgG F(c) fragment was prepared from normal serum by a multi-step process which includes delipidation, salt fractionation, ion exchange chromatography and papain digestion followed by chromatographic separation and extensive dialysis against the buffer stated above. Horse IgG F(c) fragment assayed by immunoelectrophoresis resulted in a single precipitin arc against anti-Horse Serum, anti-Horse IgG and anti-Horse IgG F(c). No reaction was observed against anti-Horse IgG F(ab') ₂ or anti-Papain.
----------------------------	--

Application Details

Tested Applications:	SDS-PAGE
-----------------------------	----------

Suggested Applications:	IHC (Based on references)
Application Note:	Horse IgG F(c) Fragment has been tested in SDS-Page and can be utilized as a control or standard reagent in Western Blotting and ELISA experiments.
Assay Dilutions:	All assays should be optimized by the user. Recommended dilutions (if any) may be listed below.
ELISA:	User Optimized
IHC:	User Optimized
WB:	User Optimized

Formulation

Physical State:	Liquid (sterile filtered)
Concentration:	1.0 mg/mL by UV absorbance at 280 nm
Buffer:	0.02 M Potassium Phosphate, 0.15 M Sodium Chloride, pH 7.2
Preservative:	0.01% (w/v) Sodium Azide

Shipping & Handling

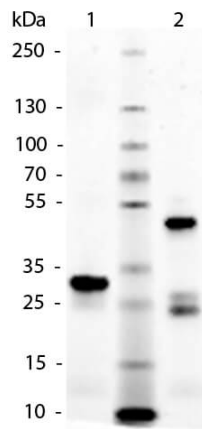
Shipping Condition:	Wet Ice
Storage Condition:	Store vial at 4° C prior to opening. This product is stable 4° C as an undiluted liquid. Dilute only prior to immediate use. For extended storage mix with an equal volume of glycerol, aliquot contents and freeze at -20° C or below. Avoid cycles of freezing and thawing.
Expiration:	Expiration date is one (1) year from date of receipt.

Images



Immunohistochemistry

Paraffin wax-embedded and hematoxylin-stained sections were used to confirm the absence of pathological changes by light microscopy. For immunohistochemistry, 3–4 μm sections were placed on coated slides and dried to enhance tissue adherence. Antigen retrieval was performed on deparaffinized and rehydrated sections by heating in citrate buffer (pH 6). Primary antibody: Anti-Horse IgG F(c) goat antibody 608–1103 (dilution 1:30 000), Negative control: Horse IgG F(c) fragment 008–0103 (dilution 1:30 000). Immunohistochemically stained equine cornea. The signal intensity scores were epithelium: 0, stroma: 2, DM: 0, and endothelium: 2. Fig 4. PMID: 35239261.



SDS-PAGE

SDS-Page of Horse IgG F(c) Fragment. Lane 1: Horse IgG F(c) Fragment – Reduced. Lane 2: Horse IgG F(c) Fragment – Non-reduced. Load: 1.0 μg per lane. Predicted/Observed Size: Reduced- 25 kDa, Non-Reduced- 50 kDa.

References

- Herb VM et al. Immunohistochemical staining of immunoglobulin G in healthy equine, canine, and feline corneas. *Vet Ophthalmol.* (2022)

Disclaimer

This product is for research use only and is not intended for therapeutic or diagnostic applications. Please contact a technical service representative for more information. All products of animal origin manufactured by Rockland Immunochemicals are derived from starting materials of North American origin. Collection was performed in United States Department of Agriculture (USDA) inspected facilities and all materials have been inspected and certified to be free of disease and suitable for exportation. All properties listed are typical characteristics and are not specifications. All suggestions and data are offered in good faith but without guarantee as conditions and methods of use of our products are beyond our control. All claims must be made within 30 days following the date of delivery. The prospective user must determine the suitability of our materials before adopting them on a commercial scale. Suggested uses of our products are not recommendations to use our products in violation of any patent or as a license under any patent of Rockland Immunochemicals, Inc. If you require a commercial license to use this material and do not have one, then return this material, unopened to: Rockland Inc., P.O. BOX 5199, Limerick, Pennsylvania, USA.